

---

**TECHNICAL MANUAL**

**ORGANIZATIONAL, DIRECT SUPPORT,  
AND GENERAL SUPPORT MAINTENANCE  
REPAIR PARTS AND SPECIAL TOOLS LISTS  
(INCLUDING DEPOT MAINTENANCE REPAIR PARTS AND SPECIAL TOOLS)**

**FOR**

**TEST SET, INSULATED BOOT  
AN/GSM-83  
(NSN 6625-00-868-8326)**

TECHNICAL MANUAL }  
No. 11-6625-694-24P }

HEADQUARTERS  
DEPARTMENT OF THE ARMY  
WASHINGTON, DC, 29 September 1978

**ORGANIZATIONAL, DIRECT SUPPORT, AND GENERAL SUPPORT MAINTENANCE  
REPAIR PARTS AND SPECIAL TOOLS LISTS  
(INCLUDING DEPOT MAINTENANCE REPAIR PARTS AND SPECIAL TOOLS)  
FOR  
TEST SET, INSULATED BOOT AN/GSM-83  
(NSN 6625-00-868-8326)**

*Current as of 16 June 1978*

**REPORTING OF ERRORS**

You can improve this manual by recommending improvements using DA Form 2028-2 located in the back of the manual. Simply tear out the self-addressed form, fill out as shown on the sample, fold it where shown, and drop it in the mail.

If there are no blank DA Form 2028-2 in the back of your manual, use the standard DA Form 2028 (Recommended Changes to Publications and Blank Forms) and forward to the Commander, US Army Communications and Electronics Materiel Readiness Command, ATTN: DRSEL-ME-MQ, Fort Monmouth, NJ 07703.

In either case a reply will be furnished direct to you.

**Table of Contents**

		Page	Illus Figure
SECTION	I.	Introduction .....	1
	II.	Repair parts list .....	5
Group	00	Test Set, Insulated Boot AN/GSM-83 .....	5 1, 2
	01	Test Set, Insulated Boot TS-1811/GSM-83 .....	11 3-9
	02	Cable Assembly CX-8378/GSM-83 .....	34 10
	03	Cable Assembly CX-8379/GSM-83 .....	35 11
	04	Cover, Test Set CW-645/GSM-83 (No parts authorized)	
	05	Tester, conductivity .....	36 12
SECTION	III.	Special tool list (Not applicable)	
	IV.	National stock number and part number index .....	37

\*This manual supersedes TM 11-6625-694-24P, 6 May 1977.

**SECTION I  
INTRODUCTION**

---

**1. Scope**

This manual lists spares and repair parts; special tools; special test, measurement, and diagnostic equipment (TMDE), and other special support equipment required for performance of organizational, direct support, and general support maintenance of the AN/GSM-83. It authorizes the requisitioning and issue of spares and repair parts as indicated by the source and maintenance codes.

**2. General**

This Repair Parts and Special Tools List is divided into the following sections:

*a. Section II. Repair Parts List.* A list of spares and repair parts authorized for use in the performance of maintenance. The list also includes parts which must be removed for replacement of the authorized parts. Parts lists are composed of functional groups in numeric sequence, with the parts in each group listed in figure and item number sequence.

*b. Section III. Special Tools List.* Not applicable.

*c. Section IV. National Stock Number and Part Number Index.* A list, in National item identification number (NIIN) sequence, of all National stock numbers (NSN) appearing in the listings, followed by a list, in alphameric sequence, of all part numbers appearing in the listings. National stock numbers and part numbers are cross-referenced to each illustration figure and item number appearance.

**3. Explanation of Columns**

*a. Illustration.* This column is divided as follows:

(1) *Figure number.* Indicates the figure number of the illustration on which the item is shown.

(2) *Item number.* The number used to identify item called out in the illustration.

*b. Source, Maintenance, and Recoverability (SMR) Codes.*

(1) *Source code.* Source codes indicate the manner of acquiring support items for maintenance, repair, or overhaul of end items. Source codes are entered in the first and second positions of the Uniform SMR Code format as follows:

<i>Code</i>	<i>Definition</i>
PA-Item procured and stocked for anticipated or known unsafe.	

<i>Code</i>	<i>Definition</i>
XD-A	support item that is not stocked. When required, item will be procured through normal supply channels.

**NOTE**

**Cannibalization or salvage may be used as a source of supply for any items source coded above except those coded XA and aircraft support items as restricted by AR 700-42.**

(2) *Maintenance code.* Maintenance codes are assigned to indicate the levels of maintenance authorized to USE and REPAIR support items. The maintenance codes are entered in the third and fourth positions of the Uniform SMR Code format as follows:

(a) The maintenance code entered in the third position will indicate the lowest maintenance level authorized to remove, replace, and use the support item. The maintenance code entered in the third position will indicate one of the following levels of maintenance:

<i>Code</i>	<i>Application/Explanation</i>
O-Support item is removed, replaced, used at the organizational level.	
H-Support item is removed, replaced, used at the general support level.	

(b) The maintenance code entered in the fourth position indicates whether the item is to be repaired and identifies the lowest maintenance level with the capability to perform complete repair (i.e., all authorized maintenance functions). This position will contain one of the following maintenance codes:

<i>Code</i>	<i>Application/Explanation</i>
H-The lowest maintenance level capable of complete repair of the support item is the general support level.	
Z-Nonreparable. No repair is authorized.	

(3) *Recoverability code.* Recoverability codes are assigned to support items to indicate the disposition action on unserviceable items. The recoverability code is entered in the fifth position of the Uniform SMR Code format as follows:

<i>Recoverability codes</i>	<i>Definition</i>
Z-Nonreparable item.	When unserviceable, condemn and dispose at the level indicated in position 3.
H-Reparable item.	When uneconomically

*Recoverability  
codes*

*Definition*

reparable, condemn and dispose at the general support level.

D-Reparable item. When beyond lower level repair capability, return to depot. Condemnation and disposal not authorized below depot level.

*c. National Stock Number.* Indicates the National stock number assigned to the item and will be used for requisitioning purposes.

*d. Part Number.* Indicates the primary number used by the manufacturer (individual, company, firm, corporation, or Government activity), which controls the design and characteristics of the item by means of its engineering drawings, specifications, standards, and inspection requirements to identify an item or range of items.

**NOTE**

**When a stock numbered item is requisitioned, the repair parts received may have a different part number than the part being replaced.**

*e. Federal Supply Code for Manufacturer (FSCM).* The FSCM is a 5-digit numeric code listed in SB 708-42 which is used to identify the manufacturer, distributor, or Government agency, etc.

*f. Description.* Indicates the Federal item name and, if required, a minimum description to identify the item.

*g. Unit of Measure (U/M).* Indicates the standard of the basic quantity of the listed item as used in performing the actual maintenance function. This measure is expressed by a two character alphabetical abbreviation (e.g., ea, in, pr, etc). When the unit of measure differs from the unit of issue, the lowest unit of issue that will satisfy the required units of measure will be requisitioned.

*h. Quantity Incorporated in Unit.* Indicates the quantity of the item used in the breakout shown on the illustration figure, which is prepared for a functional group, subfunctional group, or an assembly.

#### 4. Special Information

The following publications pertain to the AN/GSM-83 and its components:

TM 11-6625-694-12, Test Set, Insulated Boot AN/GSM-83

TM 11-6625-694-45, Test Set, Insulated Boot AN/GSM-83

#### 5. How to Locate Repair Parts

*a.* When National stock number or part number is unknown.

(1) *First.* Using the table of contents, determine the functional group within which the item belongs. This is necessary since illustrations are prepared for functional groups and listings are divided into the same groups.

(2) *Second.* Find the illustration covering the functional group to which the item belongs.

(3) *Third.* Identify the item on the Illustration and note the Illustration figure and item number of the item.

(4) *Fourth.* Using the Repair Parts Listing, find the figure and item number noted on the illustration.

*b.* When National stock number or part number is known.

(1) *First.* Using the Index of National Stock Numbers and Part Numbers, find the pertinent National stock number or part number. This index is in NIIN sequence followed by a list of part numbers in alphameric sequence, cross-referenced to the illustration figure number and item number.

(2) *Second.* After finding the figure and item number, locate the figure and item number in the repair parts list.

#### 6. Abbreviations

Not applicable.

(Next printed page is 4)

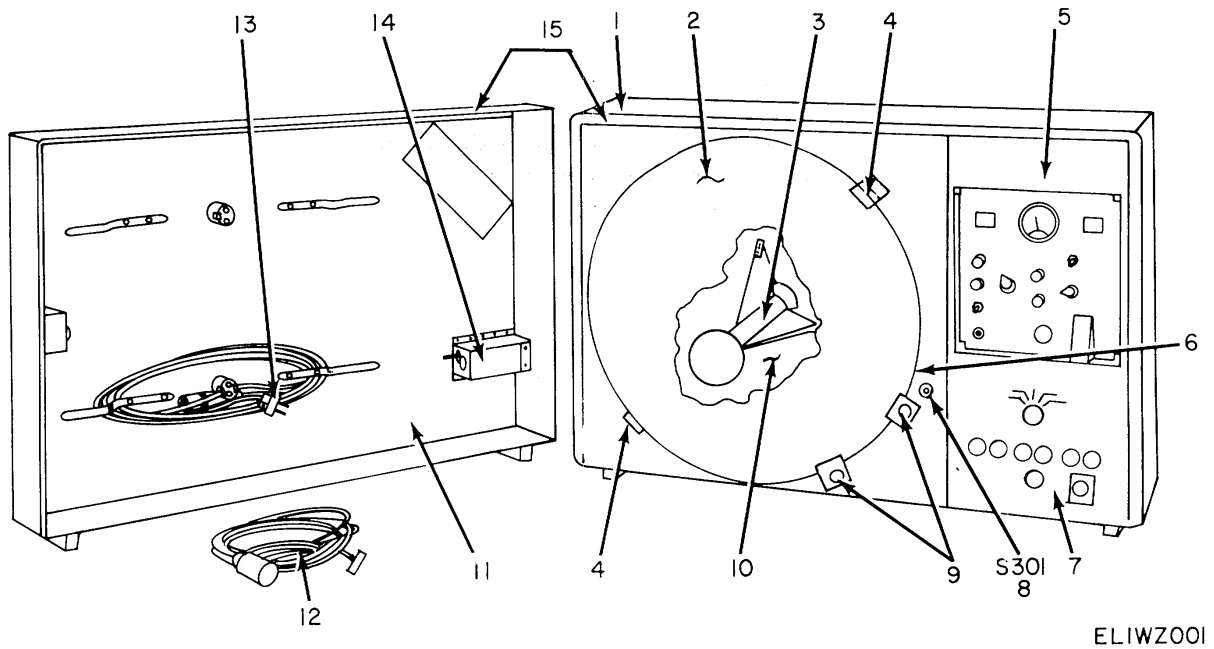


Figure 1. Test Set, Insulated Boot AN/GSM-83.

## SECTION II

TM 11-6625-694-24P

(1) ILLUSTRATION		(2)	(3)	(4)	(5)	(6)	(7)	(8)
(a) FIG NO.	(b) ITEM NO.	SMR CODE	NATIONAL STOCK NUMBER	PART NUMBER	FSCM	DESCRIPTION USABLE ON CODES	U/M	QTY INC IN UNIT
						GROUP 00 TEST SET, INSULATED BOOT AN/GSM-83		
1	1	XDHHH		SMD421792	80063	CASE, TEST SET	EA	1
1	2	XDHHH		SMD421873	80063	ENCLOSURE, BOOT, ASSEMBLY	EA	1
1	3	PAHZZ	6625-00-933-4530	SMC421877	80063	CENTER POST ASSEMBLY	EA	1
1	4	PAHZZ	3120-00-517-8488	FB46-5	71041	BEARING, SLEEVE	EA	2
1	5	XDHHH		SMC421860	80063	BRIDGE ASSEMBLY	EA	1
1	6	PAHZZ	5930-00-636-4883	MC-2711	98278	ADAPTER, SWITCH	EA	1
1	7	XDHHH		SMD421949	80063	POWER SUPPLY	EA	1
1	8	XDHZZ		BZ2R	98278	SWITCH, SENSITIVE ACTUATOR	EA	1
1	9	XDHZZ		5H149	04850	MAGNET	EA	2
1	10	PAHZZ	6625-00-933-4529	SMC421956	80063	SPHERE, INNER	EA	1
1	11	XDOHH		CW/645/GSM-83	80058	COVER, TEST SET	EA	1
1	12	PAOHH	6150-00-985-8397	CX-8379/GSM-83	80058	CABLE ASSEMBLY, POWER, ELECTRICAL	EA	1
1	13	PAOHH	6150-00-985-8398	CX-8378/GSM-83	80058	CABLE ASSEMBLY, POWER, ELECTRICAL	EA	1
1	14	PAHHH	6625-00-933-7366	SMD421925	80063	TESTER, CONDUCTIVITY	EA	1
1	15	XDHHD		TS-1811/GSM-83	80058	TEST SET, INSULATED BOOT	EA	1

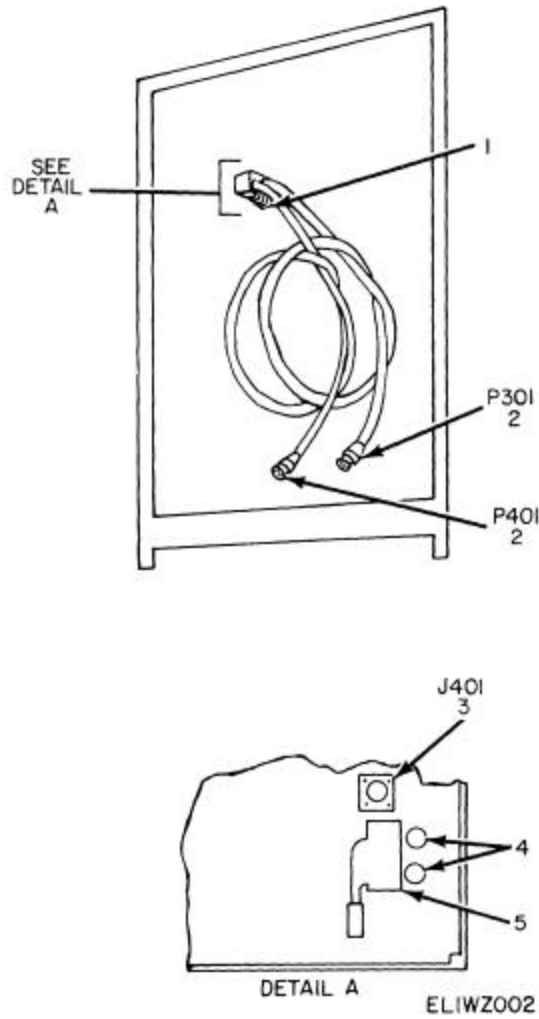


Figure 2. Test Set, Insulated Boot AN/GSM-83, Inside Cover.

(1) ILLUSTRATION		(2)	(3)	(4)	(5)	(6)	(7)	(8)
(a) FIG NO.	(b) ITEM NO.	SMR CODE	NATIONAL STOCK NUMBER	PART NUMBER	FSCM	DESCRIPTION USABLE ON CODES	U/M	QTY INC IN UNIT
2	1	PAHZZ	5940-00-983-6043	2-140	71785	TERMINAL BOARD	EA	1
2	2	XDHZZ		UG260BU	02660	CONNECTOR, PLUG, ELECTRICAL	EA	2
2	3	PAHZZ	5935-00-936-7383	UG262DU	80058	CONNECTOR, RECEPTACLE, ELECTRICAL	EA	1
2	4	PAHZZ	5940-00-642-3963	1990	71279	INSULATOR, STANDOFF	EA	2
2	5	PAHZZ	5940-00-983-6046	5-140	71785	TERMINAL BOARD	EA	1

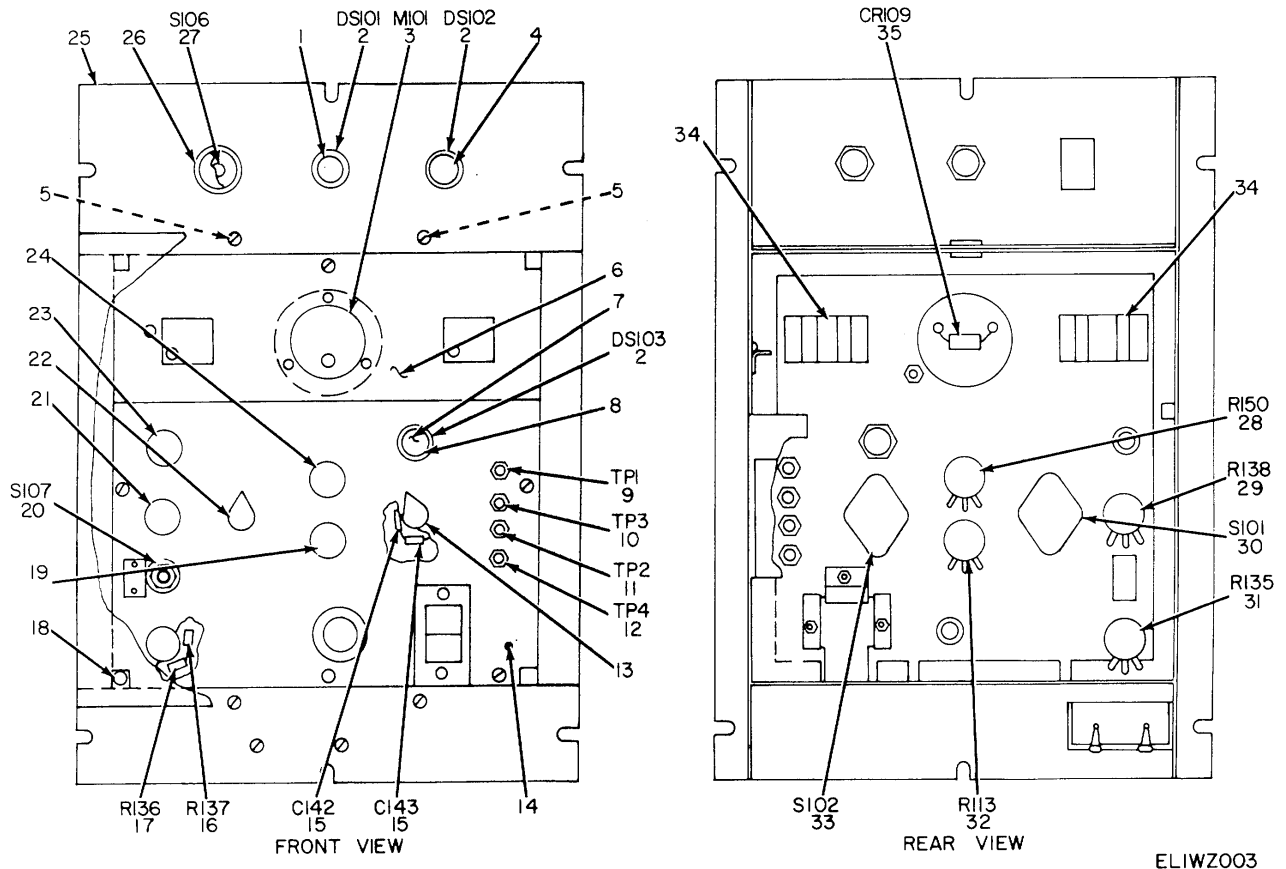
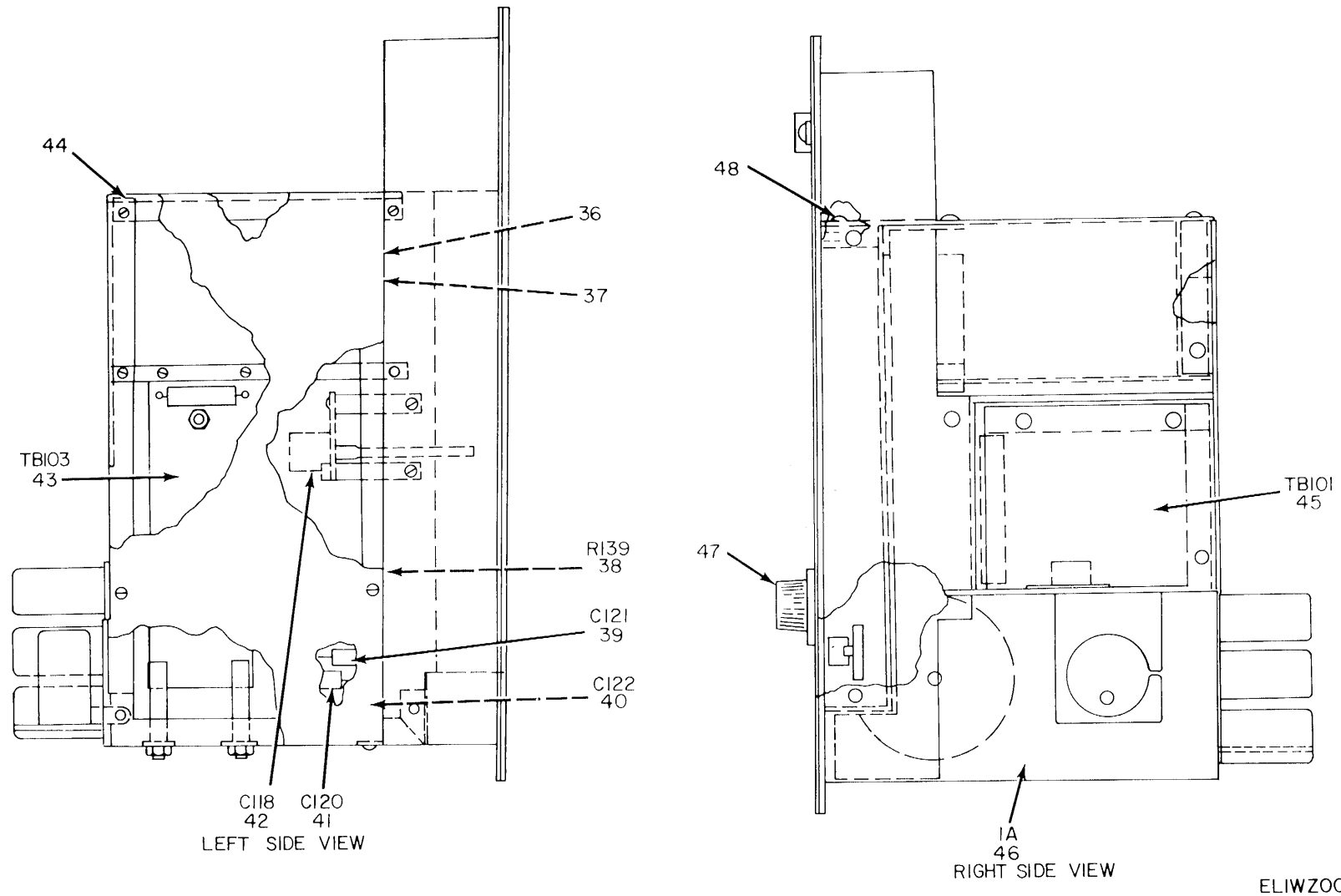


Figure 3. Test Set, Insulated Boot TS-1811/GSM-83 (Sheet 1 of 3).





ELIWZ004

Figure 3. Test Set, Insulated Boot TS-1811/GSM-83 (Sheet 2 of 3).

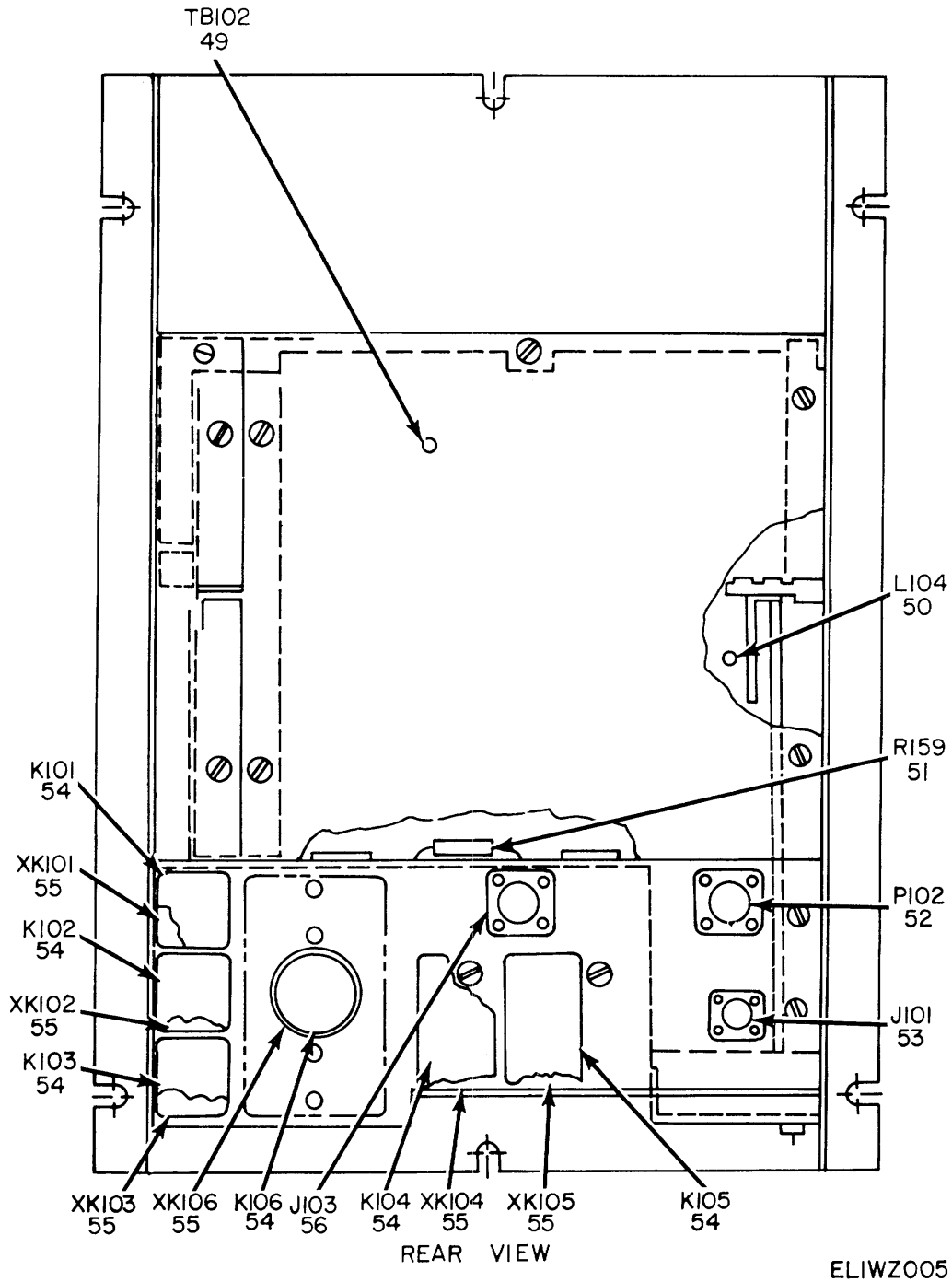


Figure 3. Test Set, Insulated Boot TS-1811/GSM-83 (Sheet 3 of 3).

## SECTION II

TM 11-6625-694-24P

(1) ILLUSTRATION		(2)	(3)	(4)	(5)	(6)	(7)	(8)
(a) FIG NO.	(b) ITEM NO.	SMR CODE	NATIONAL STOCK NUMBER	PART NUMBER	FSCM	DESCRIPTION USABLE ON CODES	U/M	QTY INC IN UNIT
						GROUP 01 TEST SET, INSULATED BOOT  TS-1811/GSM-83		
3	1	PAHZZ	6210-00-655-2234	101-5030-936	72619	INDICATOR LIGHT	EA	1
3	2	PAOZZ	6240-00-851-4352	330	24455	LAMP, INCANDESCENT	EA	3
3	3	PAHZZ	6625-00-233-4680	125	55026	AMMETER	EA	1
3	4	PAHZZ	6210-00-617-1552	101-5030-932	72619	INDICATOR LIGHT	EA	1
3	5	PAHZZ	5940-00-812-8151	3650-2	71279	INSULATOR, STANDOFF	EA	2
3	6	XDHHH		SMD421917	80063	PANEL ASSEMBLY	EA	1
3	7	PAOZZ	6210-00-842-1679	101-931	72619	LENS, INDICATOR LIGHT	EA	1
3	8	PAHZZ	6210-00-578-6587	101-5030	72619	LAMPHOLDER	EA	1
3	9	PAHZZ	5935-00-602-8746	105-0207200	74970	JACK, TIP	EA	1
3	10	PAHZZ	5935-00-715-8187	105-210-200	74970	JACK, TIP	EA	1
3	11	PAHZZ	5935-00-577-2337	105-204-200	94970	JACK, TIP	EA	1
3	12	PAHZZ	5935-00-762-0312	105-0203-200	74970	JACK, TIP	EA	1
3	13	XDOZZ		SMC421780-3	80063	KNOB	EA	1
3	14	XDHHH		SMC421916	80063	PANEL SUBASSEMBLY	EA	1
3	15	XDHZZ		CM15C050G03	81349	CAPACITOR, FIXED, MICA SELECT	EA	2
3	15	PAHZZ	5910-00-727-3548	CM15CD200J03	81349	CAPACITOR, FIXED, MICA SELECT	EA	2
3	15	PAHZZ	5910-00-725-7647	CM15CD220J03	81349	CAPACITOR, FIXED, CERAMIC SELECT	EA	2
3	15	XDHZZ		CM20C240J03	81349	CAPACITOR, FIXED, MICA SELECT	EA	2
3	15	XDHZZ	5910-00-804-2372	CM20C270J03	81349	CAPACITOR, FIXED, MICA SELECT	EA	2
3	15	PAHZZ	5910-00-901-8949	CM15ED300G03	81349	CAPACITOR, FIXED, MICA SELECT	EA	2
3	16	PAHZZ	5905-00-114-5378	RCR20G164JS	81349	RESISTOR, FIXED, COMPOSITION	EA	1
3	17	PAHZZ	5905-00-192-3978	RC20GF303J	81349	RESISTOR, FIXED, COMPOSITION	EA	1
3	18	PAOZZ	5305-00-069-5297	CS112	49956	THUMBSCREW	EA	4
3	19	XDOZZ		SMC421939-5	80063	KNOB	EA	1
3	20	PAHZZ	5930-00-615-7882	MS35059-27	96906	SWITCH, TOGGLE	EA	1
3	21	XDOZZ		SMC421939-2	80063	KNOB	EA	1
3	22	XDOZZ		SMC421780-2	80063	KNOB	EA	1
3	23	XDOZZ		SMC421939-3	80063	KNOB	EA	1
3	24	XDOZZ		SMC421939-4	80063	KNOB	EA	1
3	25	XDHHH		SMD421936	80063	PANEL ASSEMBLY	EA	1
3	26	XDHZZ		52PA6Y2	91929	ADAPTER, SWITCH ACTUATOR	EA	1
3	27	PAHZZ	5930-00-088-4214	52PB4T2	91929	SWITCH, PUSH	EA	1
3	28	PAHZZ	5905-00-539-2479	RV4LAYS502A	81349	RESISTOR, VARIABLE	EA	1
3	29	PAHZZ	5905-00-539-4897	RV4LAYS501A	81349	RESISTOR, VARIABLE	EA	1
3	30	PAHZZ	5930-00-933-2362	SMB421938	80063	SWITCH ASSEMBLY	EA	1
3	31	PAHZZ	5905-00-501-7314	RV4LAYS5025A	81349	RESISTOR, VARIABLE	EA	1
3	32	PAHZZ	5905-00-501-5184	RV4LAYS503A	81349	RESISTOR, VARIABLE	EA	1
3	33	PAHZZ	5930-00-258-4240	2512	71590	SWITCH, ROTARY	EA	1

## SECTION II

TM 11-6625-694-24P

(1) ILLUSTRATION		(2)	(3)	(4)	(5)	(6)	(7)	(8)
(a) FIG NO.	(b) ITEM NO.	SMR CODE	NATIONAL STOCK NUMBER	PART NUMBER	FSCM	DESCRIPTION USABLE ON CODES	U/M	QTY INC IN UNIT
3	34	XDHZZ		QZ3R	12323	COUNTER	EA	2
3	35	PAHZZ	5961-00-931-0544	1N140	12065	SEMICONDUCTOR DEVICE, DIODE	EA	1
3	36	PAHZZ	5325-00-616-5040	1042G	72653	GROMMET	EA	1
3	37	PAHZZ	5325-00-937-2015	91121	83330	GROMMET	EA	1
3	38	PAHZZ	5905-00-279-1890	RC20GF391J	81349	RESISTOR, FIXED, COMPOSITION	EA	1
3	39	XDHZZ		CM20ED501J03	81349	CAPACITOR, FIXED, MICA	EA	1
3	40	PAHZZ	5910-00-901-8949	CM15ED300G03	81349	CAPACITOR, FIXED, MICA SELECT	EA	1
3	40	XDHZZ		CM20C390J03	81349	CAPACITOR, FIXED, MICA SELECT	EA	1
3	40	XDHZZ		CM20C500J03	81349	CAPACITOR, FIXED, MICA SELECT	EA	1
3	40	XDHZZ		CM20C620G03	81349	CAPACITOR, FIXED, MICA SELECT	EA	1
3	40	XDHZZ		CM20C680J03	81349	CAPACITOR, FIXED, CERAMIC SELECT	EA	1
3	40	PAHZZ	5910-00-727-4995	CM15C820G03	81349	CAPACITOR, FIXED, MICA SELECT	EA	1
3	40	PAHZZ	5910-00-717-0169	CM15FD101G03	81349	CAPACITOR, FIXED, MICA SELECT	EA	1
3	40	XDHZZ		CM20E121J03	81349	CAPACITOR, FIXED, CERAMIC SELECT	EA	1
3	40	XDHZZ		CM20E151J03	81349	CAPACITOR, FIXED, CERAMIC SELECT	EA	1
3	40	PAHZZ	5910-00-765-6226	CM15FD161G03	81349	CAPACITOR, FIXED, MICA SELECT	EA	1
3	40	PAHZZ	5910-00-772-1820	CM15FD181G03	81349	CAPACITOR, FIXED, MICA SELECT	EA	1
3	40	PAHZZ	5910-00-725-1993	CM15FD201G03	81349	CAPACITOR, FIXED, MICA SELECT	EA	1
3	41	XDHZZ		1420-9706	24655	CAPACITOR, VARIABLE, AIR	EA	1
3	42	PAHZZ	5910-00-681-9217	MAPC15B	80583	CAPACITOR, VARIABLE, AIR	EA	1
3	43	XDHHH		SMD421933	80063	BOARD ASSEMBLY, BRIDGE	EA	1
3	44	XDHHH		SMD421836	80063	CHASSIS ASSEMBLY	EA	1
3	45	XDHHH		SMD421799	80063	BOARD ASSEMBLY, BRIDGE	EA	1
3	46	XDHHH		SMD421774	80063	CAPACITOR DRIVE ASSEMBLY	EA	1
3	47	XDOZZ		M915282N2B	96906	KNOB	EA	1
3	48	XDHZZ		91113	83330	GROMMET	EA	1
3	49	XDHHH		SMD421910	80063	BOARD ASSEMBLY, BRIDGE	EA	1
3	50	PAHZZ	5950-00-917-9921	ET-001A	81095	COIL, CHOKE	EA	1
3	51	PAHZZ	5905-00-706-8010	F103	44655	RESISTOR, FIXED, WIRE WOUND	EA	1
3	52	PAHZZ	5935-00-503-1281	165-11	02660	CONNECTOR, RECEPTACLE, ELECTRICAL	EA	1
3	53	XDHZZ		31-203	02660	CONNECTOR, RECEPTACLE, ELECTRICAL	EA	1
3	54	PAHZZ	5945-00-606-6695	22RJCC2500GSIL	78277	RELAY, ARMATURE	EA	6
3	55	PAHZZ	5935-00-063-5789	TS101P01	81349	SOCKET, ELECTRON TUBE	EA	6
3	56	PAHZZ	5935-00-666-3003	165-36	02660	CONNECTOR, RECEPTACLE, ELECTRICAL	EA	1

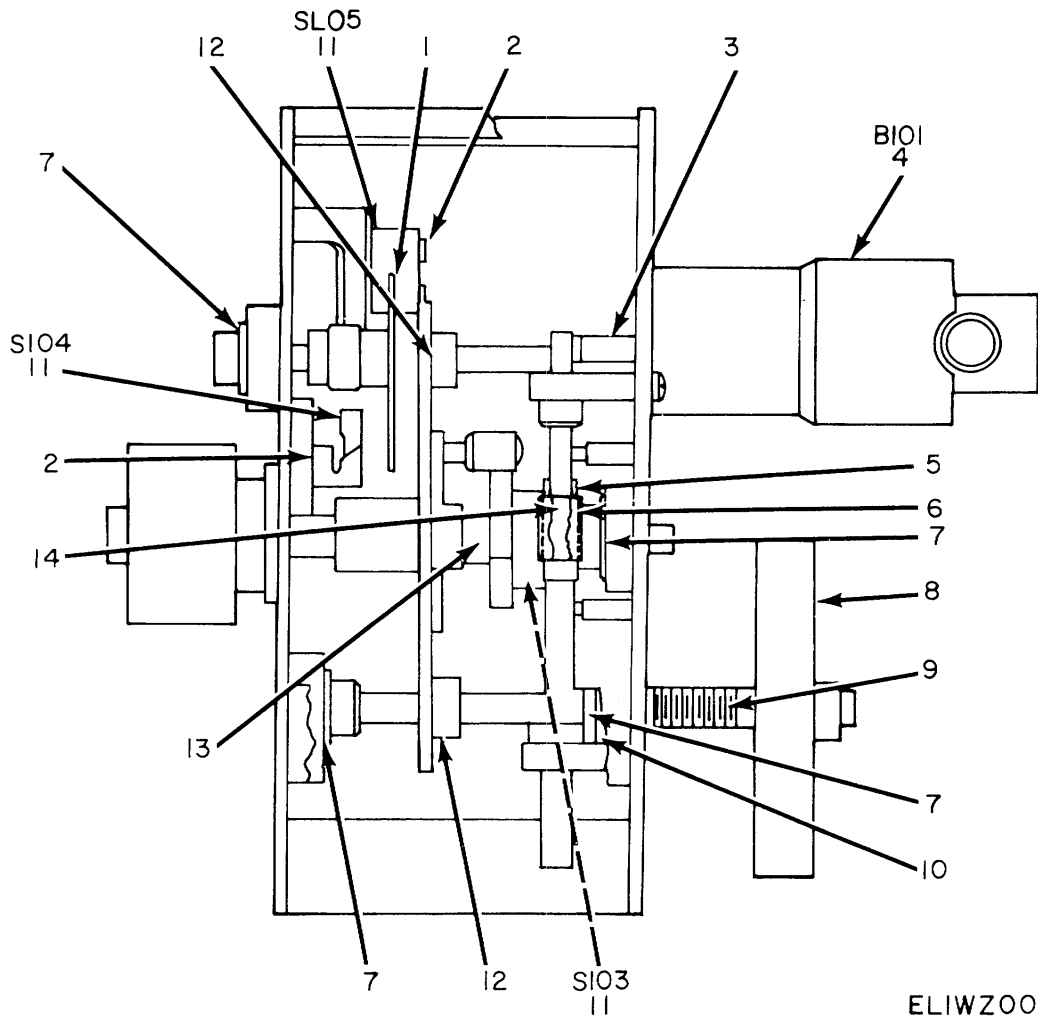
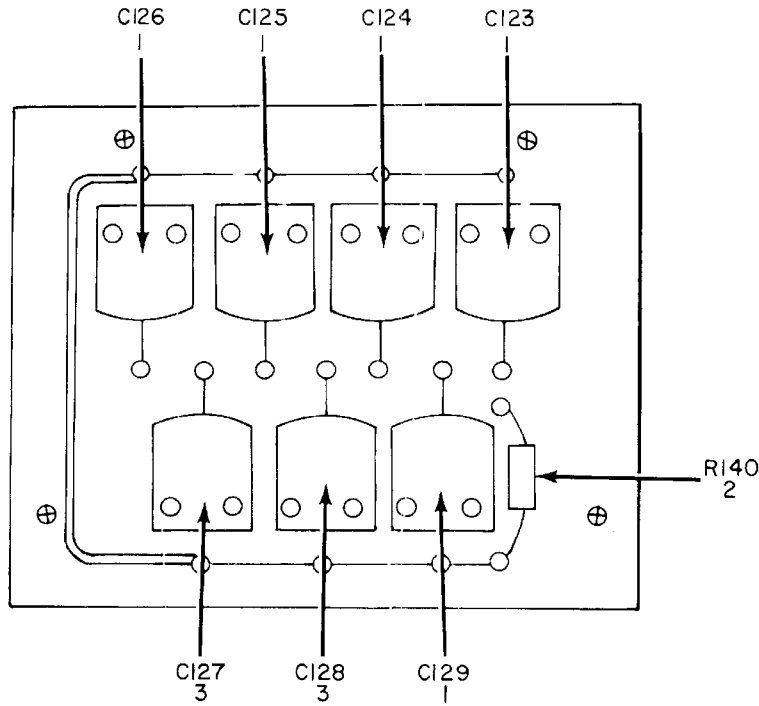


Figure 4. Test Set, Insulated Boot TS-1811/GSM-83, Drive Assembly.

## SECTION II

TM 11-6625-694-24P

(1) ILLUSTRATION		(2)	(3)	(4)	(5)	(6)	(7)	(8)
(a) FIG NO.	(b) ITEM NO.	SMR CODE	NATIONAL STOCK NUMBER	PART NUMBER	FSCM	DESCRIPTION USABLE ON CODES	U/M	QTY INC IN UNIT
4	1	XDHZZ		G3-100P2	00141	GEAR, SPUR MODIFIED PER SMB421914	EA	1
4	2	PAHZZ	5930-00683-0953	JS31	98278	ADAPTER, SWITCH ACTUATOR	EA	2
4	3	PAHZZ	3010-00-904-2763	D1-3	00141	COUPLING	EA	1
4	4	PAHZZ	6105-00-917-9869	BYLM42800-50	05624	MOTOR	EA	1
4	5	PAHZZ	5930-00-296-9610	JS5	98278	ADAPTER, SWITCH ACTUATOR	EA	1
4	6	XDHZZ		Q11-10	00141	GEAR, WORM	EA	1
4	7	XDHZZ	3120-00-802-2434	AM7	00141	BEARING	EA	4
4	8	XDHZZ		M2-22	00141	DIAL	EA	1
4	9	PAHZZ	6625-00-982-0108	2-522	00371	SPRING	EA	1
4	10	XDHZZ		K1-13	00141	HUB	EA	3
4	11	PAHZZ	5930-00-583-6582	11SM1	98278	SWITCH, SENSITIVE	EA	3
4	12	XDHZZ	3020-00-850-8048	G3-50	00141	GEAR, SPUR	EA	2
4	13	XDHZZ		BYLH915-5	05624	GEAR TRAIN	EA	1
4	14	XDHZZ	3020-00-702-3693	Q12-2	00141	WORM	EA	1



ELIWZ007

Figure 5. Test Set, Insulated Boot TS-1811/GSM-83, Bridge Board Assembly TB101.

(1) ILLUSTRATION		(2)	(3)	(4)	(5)	(6)	(7)	(8)
(a) FIG NO.	(b) ITEM NO.	SMR CODE	NATIONAL STOCK NUMBER	PART NUMBER	FSCM	DESCRIPTION USABLE ON CODES	U/M	QTY INC IN UNIT
5	1	PAHZZ	5910-00-556-9440	CV11A070	81349	CAPACITOR, VARIABLE, CERAMIC	EA	5
5	2	PAHZZ	5905-00-185-8510	RC20GF103J	81349	RESISTOR, FIXED, COMPOSITION	EA	1
5	3	PAHZZ	5910-00-126-1619	CV11A250	81349	CAPACITOR, VARIABLE, CERAMIC	EA	2

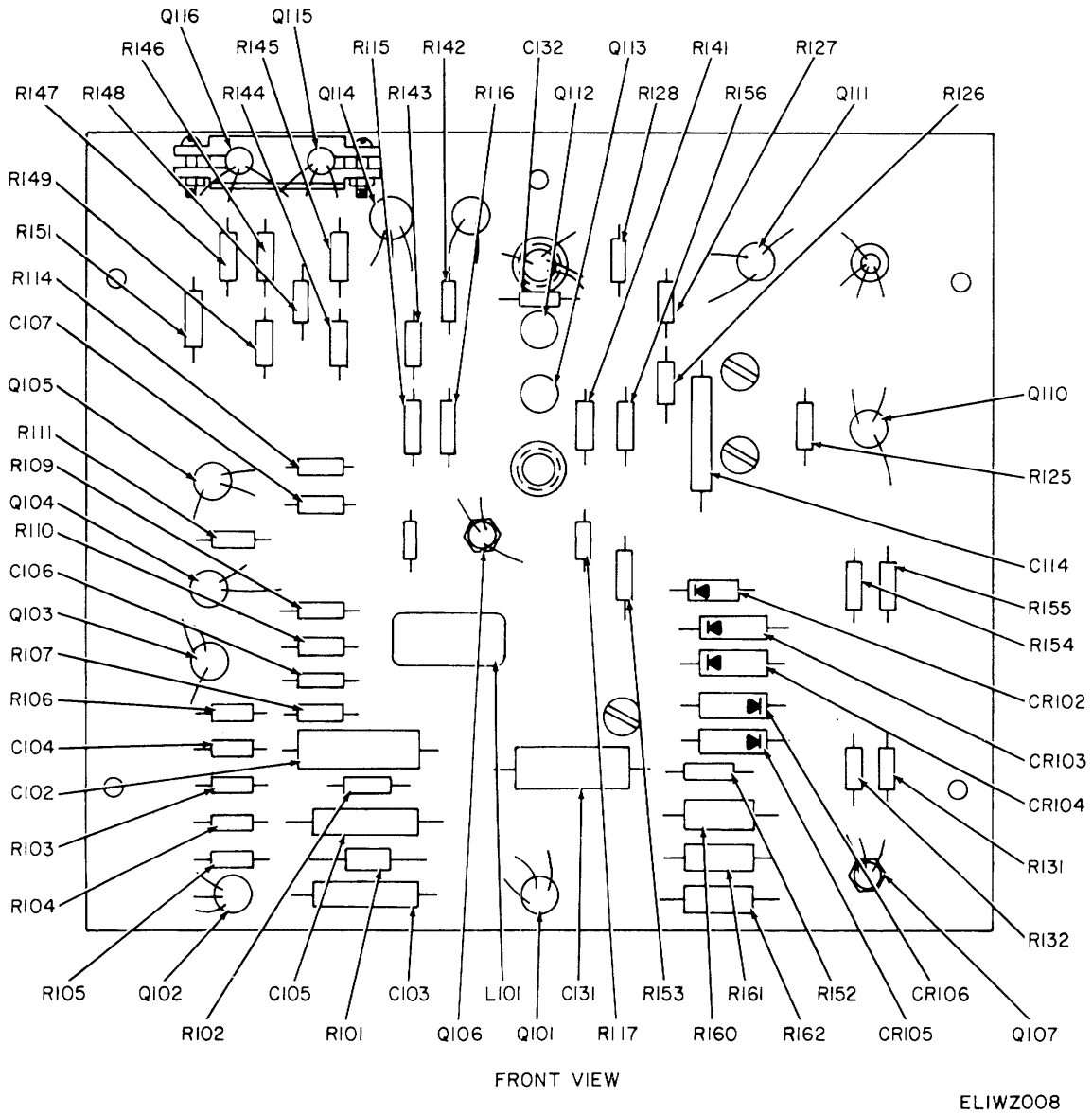
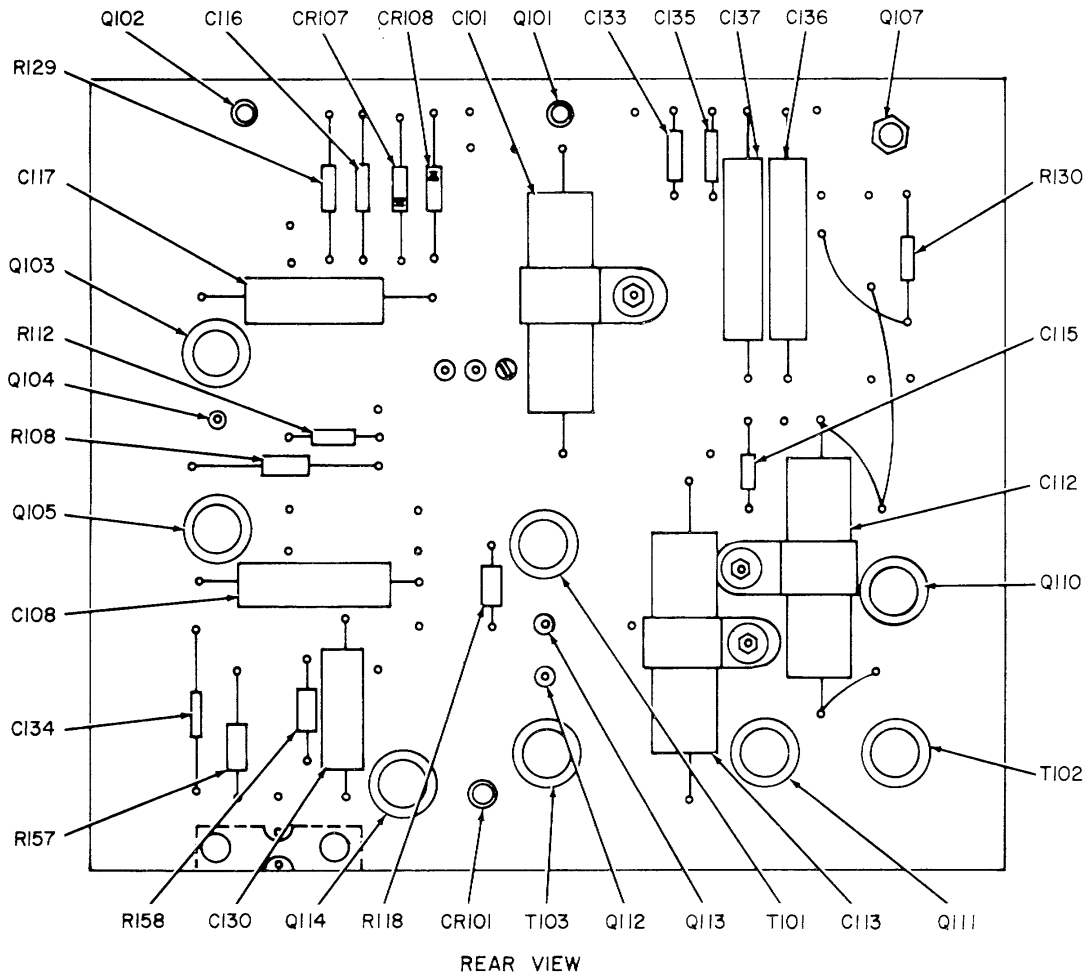


Figure 6. Test Set, Insulated Boot TS-1811/GSM-83, Terminal Board Assembly (Sheet 1 of 3).





ELIWZ009

Figure 6. Test Set, Insulated Boot TS-1811/GSM-83, Terminal Board Assembly (Sheet 2 of 3).

REF DES.	ITEM NO.	REF DES.	ITEM NO.	REF DES.	ITEM NO.	REF DES.	ITEM NO.	REF DES.	ITEM NO.
C101	1	C135	4	Q110	15	R114	18	R147	38
C102	2	C136	9	Q111	15	R115	26	R148	38
C103	3	C137	9	Q112	14	R116	27	R149	22
C104	4	CR101	10	Q113	14	R117	28	R151	22
C105	3	CR102	11	Q114	15	R118	29	R152	39
C106	4	CR103	12	Q115	14	R125	20	R153	39
C107	5	CR104	12	Q116	14	R126	30	R154	40
C108	6	CR105	12	R101	17	R127	30	R155	40
C112	1	CR106	12	R102	18	R128	31	R156	25
C113	1	CR107	11	R103	19	R129	32	R157	41
C114	3	CR108	11	R104	19	R130	33	R158	33
C115	4	L101	13	R105	17	R131	27	R160	42
C116	4	Q101	14	R106	20	R132	34	R161	42
C117	6	Q102	14	R107	20	R141	18	R162	42
C130	7	Q103	15	R108	21	R142	35	T101	43
C131	7	Q104	14	R109	22	R143	36	T102	44
C132	4	Q105	15	R110	23	R144	18	T103	45
C133	4	Q106	16	R111	24	R145	37		
C134	8	Q107	16	R112	25	R146	38		

EL1WZ010

Figure 6. Test Set, Insulated Boot TS-1811/GSM-83, Terminal Board Assembly (Sheet 3 of 3).

## SECTION II

TM 11-6625-694-24P

(1) ILLUSTRATION		(2) SMR CODE	(3) NATIONAL STOCK NUMBER	(4) PART NUMBER	(5) FSCM	(6) DESCRIPTION USABLE ON CODES	(7) U/M	(8) QTY INC IN UNIT
(a) FIG NO.	(b) ITEM NO.							
6	1	PAHZZ	5910-00-686-6005	CP05A1KB105K3	81349	CAPACITOR, FIXED, PAPER	EA	3
6	2	XDHZZ		CP05A1KC473K	81349	CAPACITOR, FIXED, PAPER	EA	1
6	3	PAHZZ	5910-00-681-7347	CL25BE150UP3	81349	CAPACITOR, FIXED, ELECTROLYTIC	EA	3
6	4	XDHZZ		C80V103AM	00656	CAPACITOR, FIXED, CERAMIC	EA	7
6	5	XDHZZ		C80V202AM	00656	CAPACITOR, FIXED, CERAMIC	EA	1
6	6	PAHZZ	5910-00-818-9758	CP05A1KB224K3	81349	CAPACITOR, FIXED, PAPER	EA	2
6	7	PAHZZ	5930-00-621-9880	MILC19978-19	81349	CAPACITOR, FIXED, PAPER	EA	2
6	8	PAHZZ	5910-00-752-4545	C80V203AM	00656	CAPACITOR, FIXED, CERAMIC	EA	1
6	9	PAHZZ	5910-00-841-8747	CL25BE201UP3	81349	CAPACITOR, FIXED, ELECTROLYTIC	EA	2
6	10	PAHZZ	5961-00-617-6017	1N472	99942	SEMICONDUCTOR DEVICE, DIODE	EA	1
6	11	XDHZZ		FD-111	13715	SEMICONDUCTOR DEVICE, DIODE	EA	3
6	12	PAHZZ	5961-00-931-0544	1N140	12065	SEMICONDUCTOR DEVICE, DIODE	EA	4
6	13	PAHZZ	5950-00-647-7939	MQE-1	89665	COIL, CHOKE	EA	1
6	14	PAHZZ	5961-00-882-7248	2N1192	46859	TRANSISTOR	EA	7
6	15	PAHZZ	5961-00-838-3465	2N655	81223	TRANSISTOR	EA	5
6	16	PAHZZ	5961-00-938-5099	2N2552	01295	TRANSISTOR	EA	2
6	17	PAHZZ	5905-00-171-2004	RC20GF223J	81349	RESISTOR, FIXED, COMPOSITION	EA	2
6	18	PAHZZ	5905-00-195-6806	RC20GF102J	81349	RESISTOR, FIXED, COMPOSITION	EA	4
6	19	PAHZZ	5905-00-192-0667	RC20GF224J	81349	RESISTOR, FIXED, COMPOSITION	EA	2
6	20	PAHZZ	5905-00-279-3511	RC20GF511J	81349	RESISTOR, FIXED, COMPOSITION	EA	3
6	21	PAHZZ	5905-00-279-3499	RC20GF273J	81349	RESISTOR, FIXED, COMPOSITION	EA	1
6	22	PAHZZ	5905-00-165-6510	RC20GF103J	81349	RESISTOR, FIXED, COMPOSITION	EA	3
6	23	PAHZZ	5905-00-195-6761	RC20GF104J	81349	RESISTOR, FIXED, COMPOSITION	EA	1
6	24	PAHZZ	5905-00-190-8881	RC20GF182J	81349	RESISTOR, FIXED, COMPOSITION	EA	3
6	25	PAHZZ	5905-00-279-1876	RC20GF222J	81349	RESISTOR, FIXED, COMPOSITION	EA	2
6	26	PAHZZ	5905-00-272-2673	RC20GF622J	81349	RESISTOR, FIXED, COMPOSITION	EA	1
6	27	PAHZZ	5905-00-195-6791	RC20GF681J	81349	RESISTOR, FIXED, COMPOSITION	EA	2
6	28	PAHZZ	5905-00-279-3504	RC20GF472J	81349	RESISTOR, FIXED, COMPOSITION	EA	1
6	29	PAHZZ	5905-00-935-8540	RCR20G300JS	81349	RESISTOR, FIXED, COMPOSITION	EA	1
6	30	PAHZZ	5905-00-195-6453	RC20GF562J	81349	RESISTOR, FIXED, COMPOSITION	EA	2
6	31	PAHZZ	5905-00-279-3512	RC20GF431J	81349	RESISTOR, FIXED, COMPOSITION	EA	1
6	32	XDHZZ		RC20GF563J	81349	RESISTOR, FIXED, COMPOSITION	EA	1
6	33	PAHZZ	5905-00-299-1971	RC20GF822J	81349	RESISTOR, FIXED, COMPOSITION	EA	1
6	34	PAHZZ	5905-00-252-4018	RC20GF470J	81349	RESISTOR, FIXED, COMPOSITION	EA	1
6	35	PAHZZ	5905-00-279-3503	RC20GF682J	81349	RESISTOR, FIXED, COMPOSITION	EA	1
6	36	PAHZZ	5905-00-279-2518	RC20GF434J	81349	RESISTOR, FIXED, COMPOSITION	EA	1
6	37	PAHZZ	5905-00-279-3506	RC20GF332J	81349	RESISTOR, FIXED, COMPOSITION	EA	1
6	38	PAHZZ	5905-00-279-1757	RC20GF152J	81349	RESISTOR, FIXED, COMPOSITION	EA	3
6	39	PAHZZ	5905-00-219-2019	RC20GF512J	81349	RESISTOR, FIXED, COMPOSITION	EA	2
6	40	PAHZZ	5905-00-192-3981	RC20GF124J	81349	RESISTOR, FIXED, COMPOSITION	EA	2

## SECTION II

TM 11-6625-694-24P

(1) ILLUSTRATION		(2)	(3)	(4)	(5)	(6)	(7)	(8)
(a) FIG NO.	(b) ITEM NO.	SMR CODE	NATIONAL STOCK NUMBER	PART NUMBER	FSCM	DESCRIPTION USABLE ON CODES	U/M	QTY INC IN UNIT
6	41	PAHZZ	5905-00-171-7998	RC20GF333J	81349	RESISTOR, FIXED, COMPOSITION	EA	1
6	42	PAHZZ	5905-00-786-8307	RC20GF6R8J	81349	RESISTOR, FIXED, COMPOSITION	EA	3
6	43	XDHZZ		DOT12	89665	TRANSFORMER, AUDIO FREQUENCY	EA	1
6	44	XDHZZ		DOT34	89665	TRANSFORMER, AUDIO FREQUENCY	EA	1
6	45	XDHZZ		DOT2	89665	TRANSFORMER, AUDIO FREQUENCY	EA	1

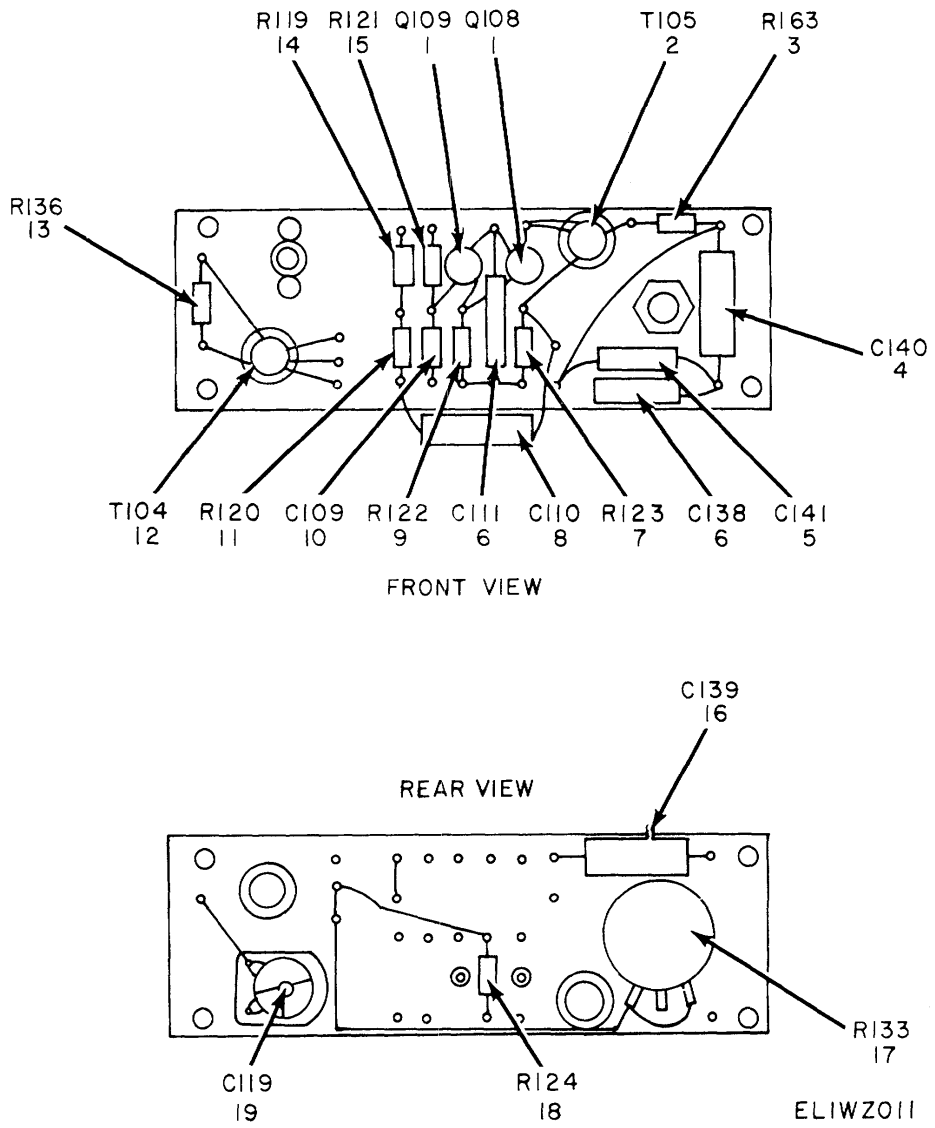


Figure 7. Test Set, Insulated Boot TS-1811/GSM-83, Bridge Board Assembly TB103.

## SECTION II

TM 11-6625-694-24P

(1) ILLUSTRATION		(2)	(3)	(4)	(5)	(6)	(7)	(8)
(a) FIG NO.	(b) ITEM NO.	SMR CODE	NATIONAL STOCK NUMBER	PART NUMBER	FSCM	DESCRIPTION USABLE ON CODES	U/M	QTY INC IN UNIT
7	1	PAHZZ	561-00-882-7248	2N1192	46859	TRANSISTOR	EA	2
7	2	XDHZZ		DOT2	89665	TRANSFORMER, AUDIO FREQUENCY	EA	1
7	3	PAHZZ	5905-00-279-1876	RC20GF222J	81349	RESISTOR, FIXED, COMPOSITION	EA	1
7	4	PAHZZ	5910-00-819-5745	CP05A1KC473K3	80183	CAPACITOR, FIXED, PAPER	EA	1
7	5	PAHZZ	5910-00-821-4702	CP05A1KE103K3	80183	CAPACITOR, FIXED, PAPER SELECT	EA	1
7	5	PAHZZ	5910-00-823-1538	CP05A1KC223K3	80183	CAPACITOR, FIXED, PAPER SELECT	EA	1
7	5	XDHZZ		91P33391S4	56289	CAPACITOR, FIXED, PAPER SELECT	EA	1
7	5	PAHZZ	5910-00-819-5745	CP05A1KC473K3	80183	CAPACITOR, FIXED, PAPER SELECT	EA	1
7	6	PAHZZ	5910-00-681-7347	CL25BE150UP3	81349	CAPACITOR, FIXED, ELECTROLYTIC	EA	2
7	7	PAHZZ	5905-00-185-8510	RC20GF103J	81349	RESISTOR, FIXED, COMPOSITION	EA	1
7	8	PAHZZ	5910-00-621-9880	MILC19978-19	81349	CAPACITOR, FIXED, PAPER	EA	1
7	9	PAHZZ	5905-00-279-3496	RC20GF513J	81349	RESISTOR, FIXED, COMPOSITION	EA	1
7	10	XDHZZ		C80V103M	00656	CAPACITOR, FIXED, PAPER	EA	1
7	11	XDHZZ		RC20GF563J	81349	RESISTOR, FIXED, COMPOSITION	EA	1
7	12	XDHZZ		DOT9	89665	TRANSFORMER	EA	1
7	13	PAHZZ	5905-00-254-9201	RC20GF473J	81349	RESISTOR, FIXED, COMPOSITION	EA	1
7	14	PAHZZ	5905-00-249-3661	RC20GF683J	81349	RESISTOR, FIXED, COMPOSITION	EA	1
7	15	PAHZZ	5905-00-279-2515	RC20GF474J	81349	RESISTOR, FIXED, COMPOSITION MODIFIED PER SMB421907	EA	1
7	16	PAHZZ	5910-00-818-9758	CP05A1KB224K3	81349	CAPACITOR, FIXED, PAPER	EA	1
7	17	PAHZZ	5905-00-501-5184	RV4LAYS503A	81349	RESISTOR, VARIABLE	EA	1
7	18	PAHZZ	5905-00-195-6806	RC20GF102J	81349	RESISTOR, FIXED, COMPOSITION	EA	1
7	19	PAHZZ	5910-00-668-6587	MAPC50B	80583	CAPACITOR, VARIABLE	EA	1

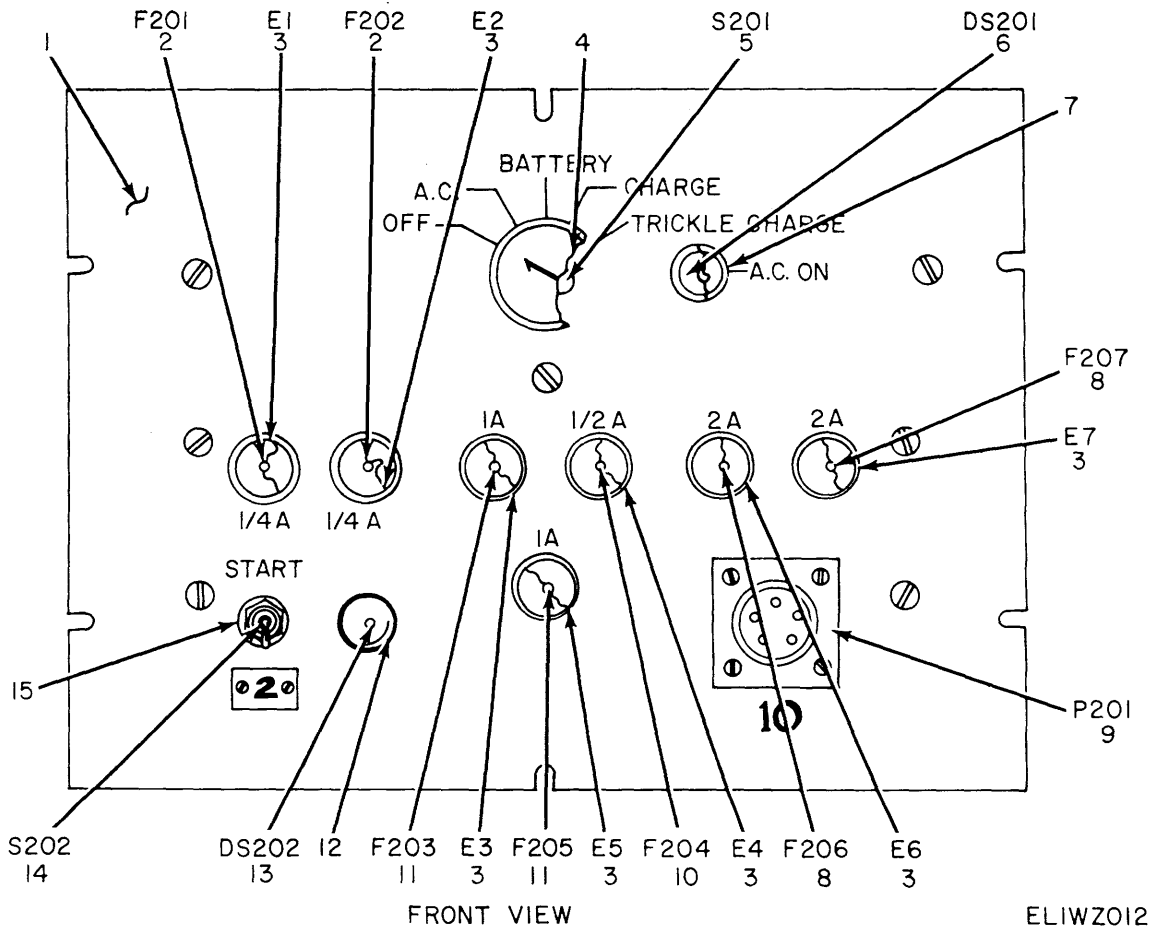


Figure 8. Test Set, Insulated Boot TS-1811/GSM-83, Power Supply (Sheet 1 of 4).

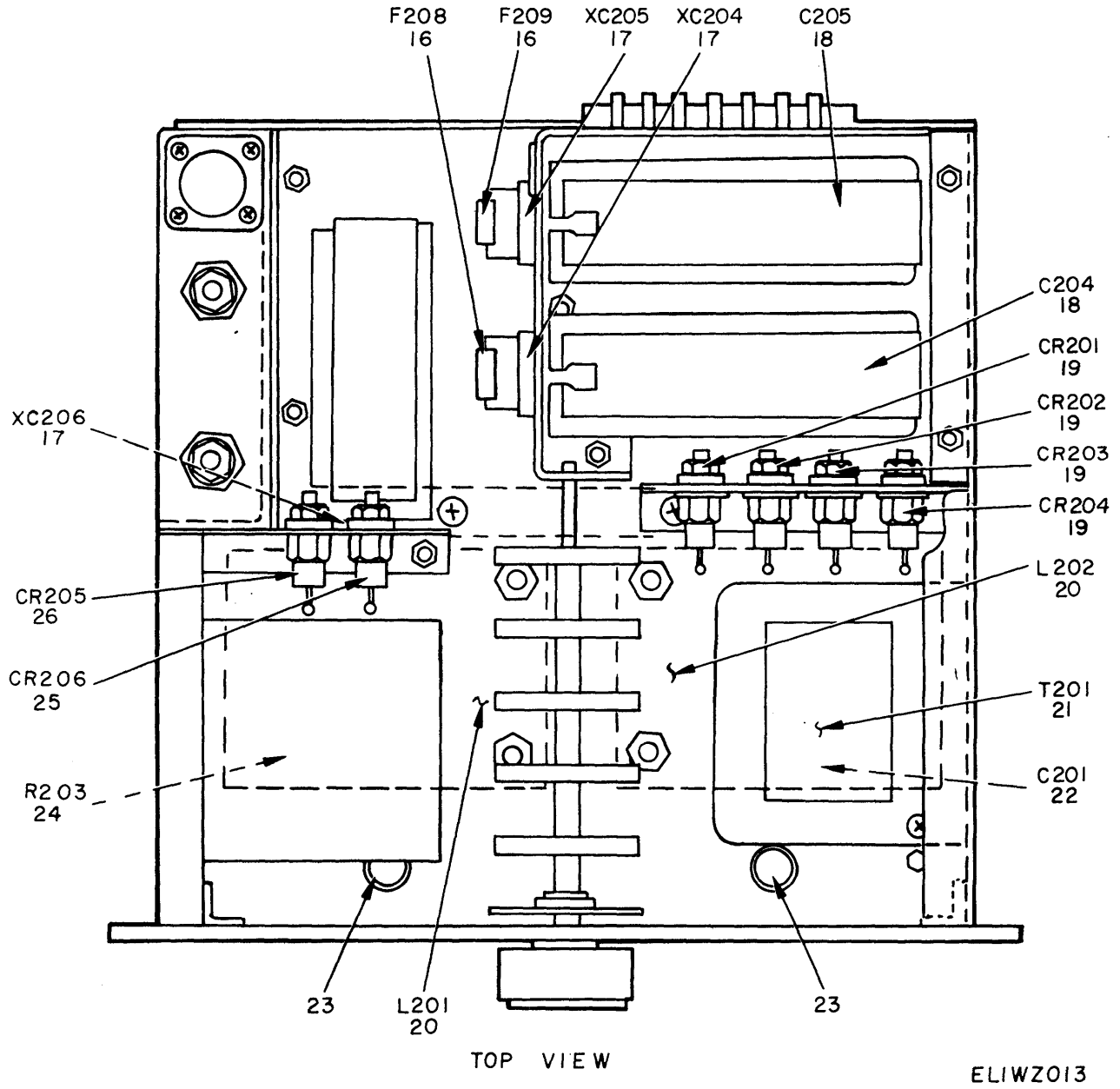


Figure 8. Test Set, Insulated Boot TS-1811/GSM-83, Power Supply (Sheet 2 of 4).



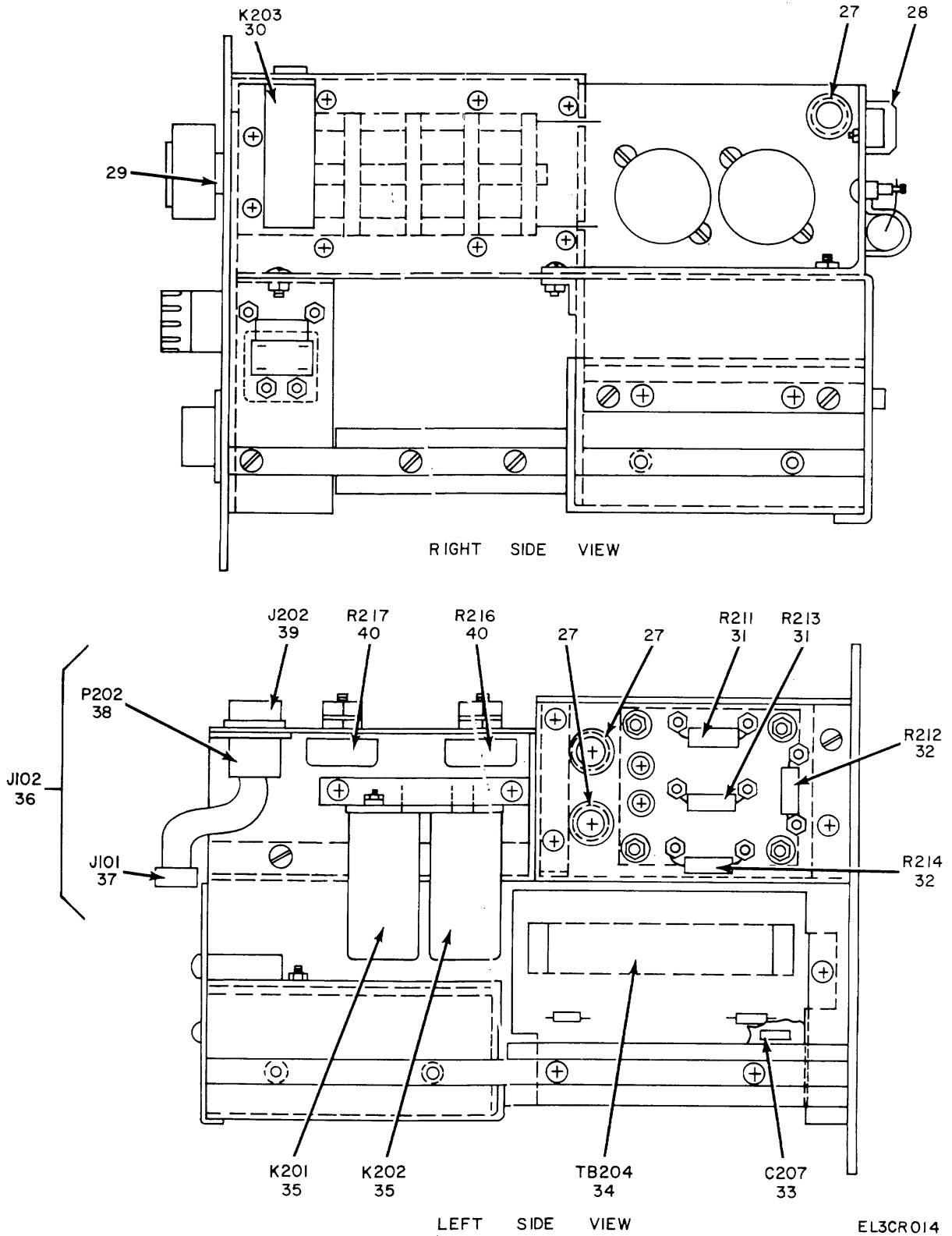
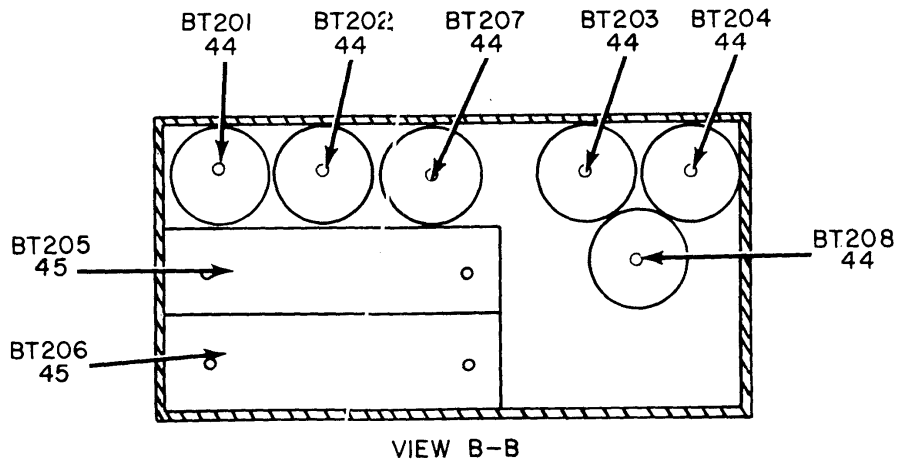
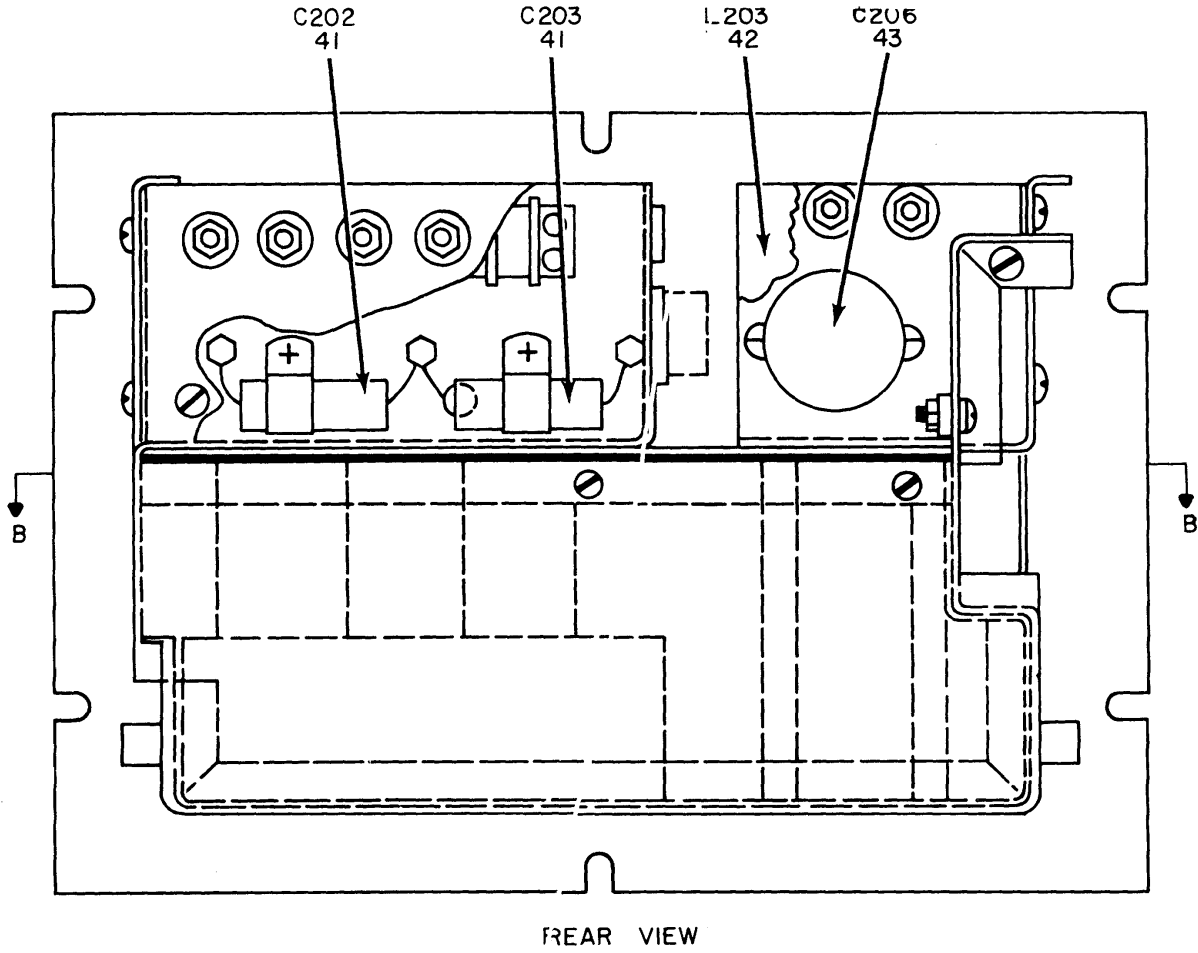


Figure 8. Test Set, Insulated Boot TS-1811/GSM-83, Power Supply (Sheet 3 of 4).



ELIWZ015

Figure 8. Test Set, Insulated Boot TS-1811/GSM-83, Power Supply (Sheet 4 of 4).

## SECTION II

TM 11-6625-694-24P

(1) ILLUSTRATION		(2)	(3)	(4)	(5)	(6)	(7)	(8)
(a) FIG NO.	(b) ITEM NO.	SMR CODE	NATIONAL STOCK NUMBER	PART NUMBER	FSCM	DESCRIPTION  USABLE ON CODE	U/M	QTY INC IN UNIT
8	1	XDHHH		SMD421817	80063	PANEL ASSEMBLY	EA	1
8	2	PAOZZ	5920-00-280-4181	312.250	75915	FUSE, CARTRIDGE	EA	2
8	3	PAHZZ	5920-00-280-4091	342006	75915	FUSEHOLDER	EA	7
8	4	XDOZZ		KMS12D2L	82214	KNOB	EA	1
8	5	XDHZZ		P272/RRD	71590	SWITCH ASSEMBLY	EA	1
8	6	PAOZZ	6240-00-155-7836	327	24455	LAMP, INCANDESCENT	EA	1
8	7	PAHZZ	6210-00-578-6810	101-5030-935	72619	INDICATOR, LIGHT	EA	1
8	8	PAOZZ	5920-00-280-5062	312002	75915	FUSE, CARTRIDGE	EA	2
8	9	XDHZZ		MS3102E16S8P	02660	CONNECTOR, PLUG, ELECTRICAL	EA	1
8	10	PAOZZ	5920-00-898-0400	312.500	75915	FUSE, CARTRIDGE	EA	1
8	11	PAOZZ	5920-00-280-8342	312001	75915	FUSE, CARTRIDGE	EA	2
8	12	PAHZZ	6210-00-577-8146	101-5030-933	72619	INDICATOR LIGHT	EA	1
8	13	PAOZZ	6240-00-851-4352	330	24455	LAMP, INCANDESCENT	EA	1
8	14	XDHZZ		12TS115-6	91929	SWITCH, TOGGLE	EA	1
8	15	PAHZZ	5930-00-539-7013	N-1030B	97539	BOOT, DUST AND MOISTURE SEAL	EA	1
8	16	PAOZZ	5920-00-835-8880	GLX4	71400	FUSE, CARTRIDGE	EA	2
8	17	PAHZZ	5935-00-063-5789	TS101P01	81349	SOCKET, ELECTRON TUBE	EA	3
8	18	XDOZZ		CE51F152F	80183	CAPACITOR, FIXED, ELECTROLYTIC	EA	2
8	19	XDHZZ		12F30	81483	SEMICONDUCTOR DEVICE, DIODE	EA	4
8	20	XDHZZ		NES1620	86632	COIL, CHOKE	EA	2
8	21	XDHZZ		NES1693	00371	TRANSFORMER, POWER, ISOLATION AND STEP-DOWN	EA	1
8	22	PAHZZ	5910-00-822-2580	CP09A1KC105K3	81349	CAPACITOR FIXED, PAPER	EA	1
8	23	PAHZZ	5325-00-899-7108	2187	83330	GROMMET	EA	2
8	24	PAHZZ	5905-00-914-9189	3-4TA51FS24	44655	RESISTOR, FIXED, WIRE WOUND	EA	1
8	25	XDHZZ		1N1594A	81483	SEMICONDUCTOR DEVICE, DIODE	EA	1
8	26	XDHZZ		1N1605A	81483	SEMICONDUCTOR DEVICE, DIODE	EA	1
8	27	XDHZZ		91124	83330	GROMMET	EA	3
8	28	XDHZZ	5940-00-983-6067	40TB6	81349	TERMINAL BOARD	EA	1
8	29	PAHZZ	5930-00-823-0482	N9030-1/4	70661	SEAL	EA	1
8	30	PAHZZ	5945-00-583-8601	22RJCC5000GSIL	78277	RELAY, ARMATURE	EA	1
8	31	PAHZZ	5905-00-878-3215	F102	44655	RESISTOR, FIXED, WIRE WOUND	EA	2
8	32	PAHZZ	5905-00-878-3216	F101	44655	RESISTOR, FIXED, WIRE WOUND	EA	2
8	33	PAHZZ	5910-00-933-2133	112D227C7030M1	80183	CAPACITOR, FIXED, ELECTROLYTIC	EA	1
8	34	XDHHH		SMC421953	80063	BOARD ASSEMBLY	EA	1
8	35	PAHZZ	5945-00-642-1874	22RJCC1000GSIL	78277	RELAY, ARMATURE	EA	2
8	36	XDHHH		SMC421941	80063	CABLE ASSEMBLY, POWER, ELECTRICAL	EA	1
8	37	PAHZZ	5935-00-581-0422	165-10	02660	CONNECTOR, PLUG, ELECTRICAL	EA	1
8	38	PAHZZ	5935-00-549-4612	165-9	02660	CONNECTOR, PLUG, ELECTRICAL	EA	1
8	39	PAHZZ	5935-00-549-4631	165-12	02660	CONNECTOR, RECEPTACLE, ELECTRICAL	EA	1
8	40	PAHZZ	5905-00-539-2479	RV4LAYS502A	81349	RESISTOR, VARIABLE	EA	2

SECTION II

TM 11-6625-694-24P

(1) ILLUSTRATION		(2)	(3)	(4)	(5)	(6)	(7)	(8)
(a) FIG NO.	(b) ITEM NO.	SMR CODE	NATIONAL STOCK NUMBER	PART NUMBER	FSCM	DESCRIPTION  USABLE ON CODE	U/M	QTY INC IN UNIT
8	41	PAHZZ	5910-00-686-6005	CP05A1KB105K3	80183	CAPACITOR, FIXED, PAPER	EA	2
8	42	PAHZZ	5950-00-648-2011	HS341	81095	COIL, CHOKE	EA	1
8	43	XDOZZ		CE51F851E	80183	CAPACITOR, FIXED, ELECTROLYTIC	EA	1
8	44	PAOZZ	6140-00-930-9834	CS602	88220	BATTERY, STORAGE	EA	6
8	45	PAOZZ	6140-00-930-9835	MP401W	88220	BATTERY, STORAGE	EA	2

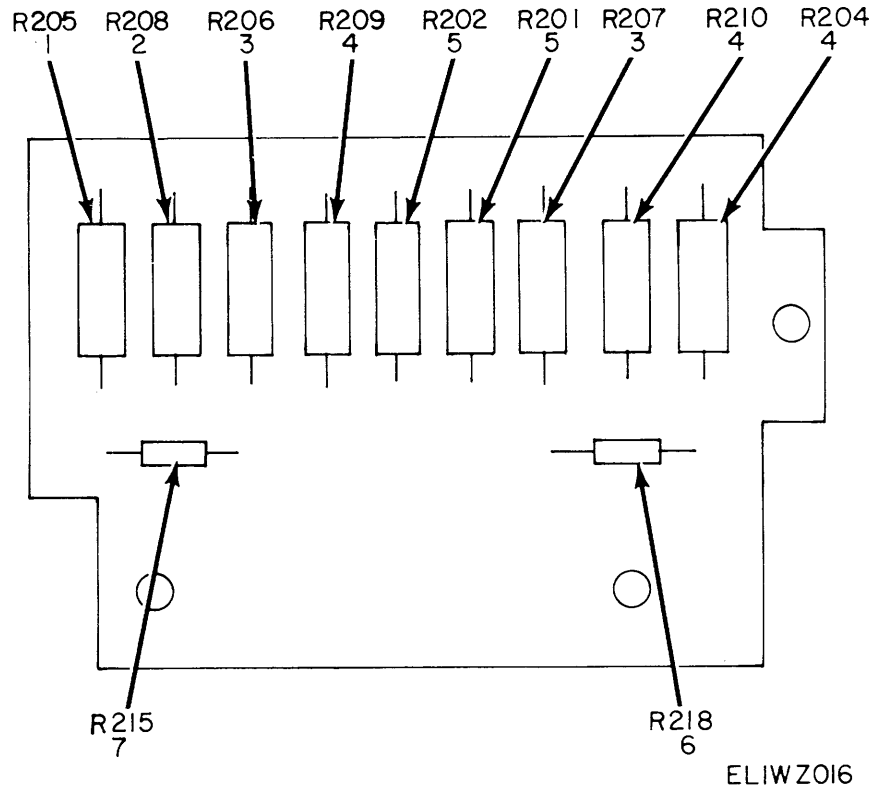
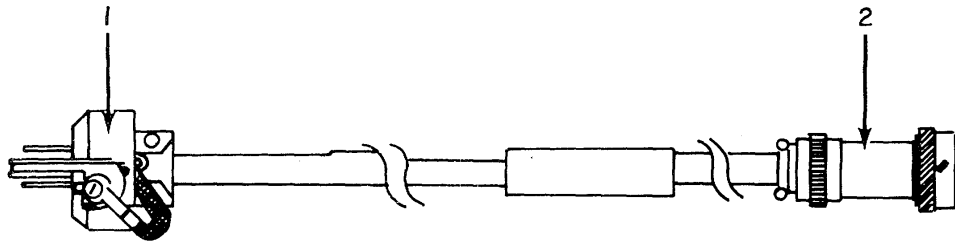


Figure 9. Test Set, Insulated Boot TS-1811/GSM-83, Terminal Board Assembly TB204.

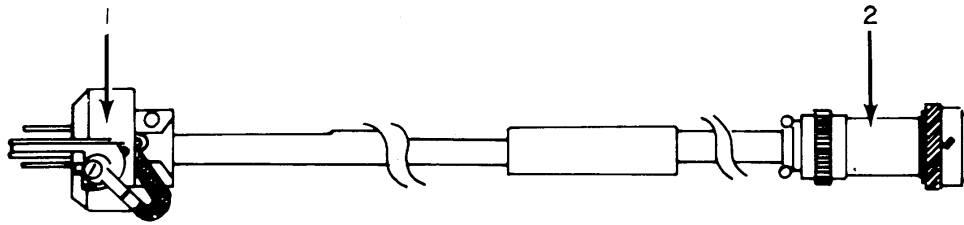
(1) ILLUSTRATION		(2)	(3)	(4)	(5)	(6)	(7)	(8)
(a) FIG NO.	(b) ITEM NO.	SMR CODE	NATIONAL STOCK NUMBER	PART NUMBER	FSCM	DESCRIPTION	U/M	QTY INC IN UNIT
						USABLE ON CODE		
9	1	PAHZZ	5905-00-253-1231	RC42GF391J	81349	RESISTOR, FIXED, COMPOSITION	EA	1
9	2	PAHZZ	5905-00-279-2302	RC42GF560J	81349	RESISTOR, FIXED, COMPOSITION	EA	1
9	3	PAHZZ	5905-00-279-1979	RC42GF101J	81349	RESISTOR, FIXED, COMPOSITION	EA	2
9	4	PAHZZ	5905-00-279-2595	RC42GF120J	81349	RESISTOR, FIXED, COMPOSITION	EA	3
9	5	PAHZZ	5905-00-171-1975	RC42GF151J	81349	RESISTOR, FIXED, COMPOSITION	EA	2
9	6	PAHZZ	5905-00-106-9344	RCR20G101JS	81349	RESISTOR, FIXED, COMPOSITION	EA	1
9	7	PAHZZ	5905-00-252-5436	RC20GF131J	81349	RESISTOR, FIXED, COMPOSITION	EA	1



ELIWZO17

Figure 10. Cable Assembly CX-8378/GSM-83.

(1) ILLUSTRATION		(2)	(3)	(4)	(5)	(6)	(7)	(8)
(a) FIG NO.	(b) ITEM NO.	SMR CODE	NATIONAL STOCK NUMBER	PART NUMBER	FSCM	DESCRIPTION  USABLE ON CODE	U/M	QTY INC IN UNIT
10	1	PAHZZ	5935-00-636-7145	UP121M	80058	GROUP 02 CABLE ASSEMBLY CX-8378/GSM-83 CONNECTOR, PLUG, ELECTRICAL	EA	1
10	2	PAHZZ	5935-00-660-6382	MS3106A16S-8SC	96906	CONNECTOR, PLUG, ELECTRICAL	EA	1



ELIWZO18

Figure 11. Cable Assembly CX-8379/GSM-83.

(1) ILLUSTRATION		(2)	(3)	(4)	(5)	(6)	(7)	(8)
(a) FIG NO.	(b) ITEM NO.	SMR CODE	NATIONAL STOCK NUMBER	PART NUMBER	FSCM	DESCRIPTION  USABLE ON CODE	U/M	QTY INC IN UNIT
11	1	PAHZZ	5935-00-636-7145	UP121M	80058	GROUP 03 CABLE ASSEMBLY CX-8379/GSM-83 CONNECTOR, PLUG, ELECTRICAL	EA	1
11	2	PAHZZ	5935-00-660-6382	MS3106A16S-8SC	96906	CONNECTOR, PLUG, ELECTRICAL	EA	1

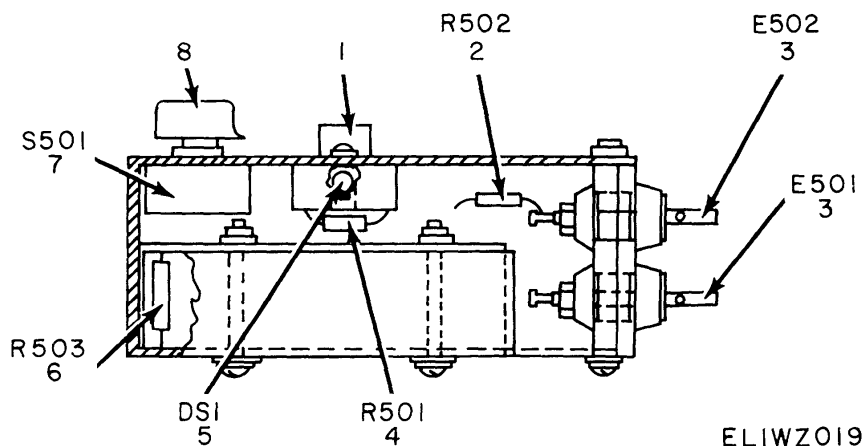


Figure 12. Tester, Conductivity.

(1) ILLUSTRATION		(2)	(3)	(4)	(5)	(6)	(7)	(8)
(a) FIG NO.	(b) ITEM NO.	SMR CODE	NATIONAL STOCK NUMBER	PART NUMBER	FSCM	DESCRIPTION	U/M	QTY INC IN UNIT
							USABLE ON CODE	
GROUP 05 TESTER, CONDUCTIVITY								
12	1	PAOZZ	6625-00-982-0056	SMB421892	80063	LENS	EA	1
12	2	PAHZZ	5905-00-171-2003	RC20GF204J	81349	RESISTOR, FIXED, COMPOSITION	EA	1
12	3	XDHZZ		SMB421903	80063	POST, BLINDING	EA	2
12	4	PAHZZ	5905-00-254-9201	RC20GF473J	81349	RESISTOR, FIXED, COMPOSITION	EA	1
12	5	PAOZZ	6240-00-226-8743	NE68	08108	LAMP, GLOW	EA	1
12	6	PAHZZ	5905-00-190-8885	RC20GF225J	81349	RESISTOR, FIXED, COMPOSITION	EA	1
12	7	PAHZZ	5930-00-647-2083	5-001-3	81073	SWITCH, ROTARY	EA	1
12	8	XDOZZ		DA1400	75212	KNOB	EA	1



## NATIONAL STOCK NUMBER AND PART NUMBER INDEX

NOTE: LATEST NATIONAL STOCK NUMBER AND PART NUMBER ASSIGNMENTS ARE INCLUDED AT END OF INDEX

STOCK NUMBER	FIGURE NO.	ITEM NO.	STOCK NUMBER	FIGURE NO.	ITEM NO.
5935-00-063-5789	3	55	5945-00-642-1874	8	35
5935-00-063-5789	8	17	5940-00-642-3964	2	4
5305-00-069-5297	3	18	5930-00-647-2083	12	7
5930-00-088-4214	3	27	5950-00-647-7939	6	13
5910-00-126-1619	5	3	5950-00-648-2011	8	42
6240-00-155-7836	8	6	6210-00-655-2234	3	1
5905-00-171-1975	9	5	5935-00-660-6382	10	2
5905-00-171-1998	6	41	5935-00-660-6382	11	2
5905-00-171-2003	12	2	5935-00-666-3003	3	56
5905-00-171-2004	6	17	5910-00-668-6587	7	19
5905-00-185-8510	5	2			
5905-00-185-8510	6	22	5910-00-681-7347	6	3
5905-00-185-8510	7	7	5910-00-681-7347	7	6
5905-00-190-8881	6	24	5910-00-681-9217	3	42
5905-00-190-8885	12	6	5930-00-683-0953	4	2
5905-00-192-0667	6	19			
5905-00-192-3978	3	17	5910-00-686-6005	6	1
5905-00-192-3981	6	40	5910-00-686-6005	8	41
5905-00-195-6761	6	23	3020-00-702-3693	4	14
5905-00-195-6806	6	18	5905-00-706-8010	3	51
5905-00-195-6806	7	18	5935-00-715-8187	3	10
6240-00-226-8743	12	5	5910-00-717-0169	3	40
5905-00-249-3661	7	14	5910-00-725-1993	3	40
5905-00-252-4018	6	34	5910-00-725-7647	3	15
5905-00-252-5436	9	7	5910-00-727-3548	3	15
5905-00-253-1231	9	1	5910-00-727-4995	3	40
5905-00-254-9201	7	13			
5905-00-254-9201	12	4	5910-00-752-4545	6	8
5930-00-258-4240	3	33	5910-00-765-6226	3	40
5905-00-279-1757	6	38	5910-00-772-1820	3	40
5905-00-279-1876	6	25			
5905-00-279-1876	7	3			
5905-00-279-1890	3	38	3120-00-802-2434	4	7
5905-00-279-1979	9	3			
5905-00-279-2019	6	39			
5905-00-279-2302	9	2	5940-00-812-8151	3	5
5905-00-279-2515	7	15			
5905-00-279-2518	6	36	5910-00-818-9758	6	6
5905-00-279-2595	9	4	5910-00-818-9758	7	16
5905-00-279-2673	6	26	5910-00-819-5745	7	4
5905-00-279-3496	7	9	5910-00-819-5745	7	5
5905-00-279-3499	6	21	5910-00-821-4702	7	5
5905-00-279-3503	6	35	5930-00-823-0482	8	29
5905-00-279-3504	6	28	5910-00-823-1538	7	5
5905-00-279-3506	6	37	5920-00-835-8880	8	16
5905-00-279-3511	6	20	5961-00-838-3465	6	15
5905-00-279-3512	6	31	6210-00-842-1679	3	7
5920-00-280-4091	8	3	3020-00-850-8048	4	12
			6240-00-851-4352	3	2
5920-00-280-8342	8	11	6240-00-851-4352	8	13
			5905-00-878-3215	8	31
5930-00-296-9610	4	5	5905-00-878-3216	8	32
5905-00-299-1971	6	33	5961-00-882-7248	6	14
5905-00-501-5184	3	32	5961-00-882-7248	7	1
5905-00-501-5184	7	17	5325-00-899-7108	8	23
5905-00-501-7314	3	31	5910-00-901-8949	3	15
5935-00-503-6128	3	52	5910-00-901-8949	3	40
3120-00-517-8488	1	4	5905-00-914-9189	8	24
5905-00-539-2479	3	28	6105-00-917-9869	4	4
5905-00-539-2479	8	40	5950-00-917-9921	3	50
5905-00-539-4897	3	29			
5930-00-539-7013	8	15	6140-00-930-9834	8	44
5935-00-549-4612	8	38	6140-00-930-9835	8	45
5935-00-549-4631	8	39	5961-00-931-0544	3	35
5910-00-556-9440	5	1	5961-00-931-0544	6	12
5935-00-577-2337	3	11	5910-00-933-2133	8	33
6210-00-577-8146	8	12			
6210-00-578-6587	3	8	5930-00-933-2362	3	30
5935-00-581-0422	8	37	6625-00-933-4529	1	10
5930-00-583-6582	4	11	6625-00-933-4530	1	3
5945-00-583-8601	8	30			
5945-00-606-6695	3	54	5325-00-937-2015	3	37
6210-00-617-1552	3	4	5961-00-938-5099	6	16
5961-00-617-6017	6	10	6625-00-982-0056	12	1
5930-00-636-4883	1	6	6625-00-982-0108	4	9
5935-00-636-7145	10	1	5940-00-983-6043	2	1
5935-00-636-7145	11	1	5940-00-983-6046	2	5

## NATIONAL STOCK NUMBER AND PART NUMBER INDEX

STOCK NUMBER	FIGURE NO.	ITEM NO.	STOCK NUMBER	FIGURE NO.	ITEM NO.		
4150-00-985-8397	1	12					
PART NUMBER	FSCM	FIG. NO.	ITEM NO.	PART NUMBER	FSCM	FIG. NO.	ITEM NO.
AM7	00141	4	7	MC-2711	98278	1	6
BYLH915-5	05624	4	13	MP401W	88220	8	45
BYLM42800-50	05624	4	4	MQE-1	89665	6	13
BZ2R	98278	1	8	MS3102E16S8P	02660	8	9
CE51F152F	80183	8	18				
CE51F851E	80183	8	43				
CL25BE150UP3	81349	6	3	M2-22	00141	4	8
CL25BE150UP3	81349	7	6	M915282N2B	96906	3	47
				N-1030B	97539	8	15
CM15C050G03	81349	3	15	NES1620	86632	8	20
				NES1693	00371	8	21
				NE68	08108	12	5
CM15C820G03	81349	3	40	N9030-1/4	70661	8	29
				P272/RRD	71590	8	5
				QZ3R	12323	3	34
				Q11-10	00141	4	6
				Q12-2	00141	4	14
				RC20GF102J	81349	6	18
CM20C240J03	81349	3	15	RC20GF102J	81349	7	18
CM20C270J03	81349	3	15	RC20GF103J	81349	5	2
CM20C390J03	81349	3	40	RC20GF103J	81349	6	22
CM20C500J03	81349	3	40	RC20GF103J	81349	7	7
CM20C620G03	81349	3	40	RC20GF104J	81349	6	23
CM20C680J03	84171	3	40	RC20GF124J	81349	6	40
CM20ED501J03	81349	3	39	RC20GF131J	81349	9	7
CM20E121J03	72136	3	40	RC20GF152J	81349	6	38
CM20E151J03	81349	3	40				
				RC20GF182J	81349	6	24
				RC20GF204J	81349	12	2
CP05A1KB105K3	81349	6	1	RC20GF222J	81349	6	25
CP05A1KB105K3	80183	8	41	RC20GF222J	81349	7	3
CP05A1KB224K3	81349	6	6	RC20GF223J	81349	6	17
CP05A1KB224K3	81349	7	16	RC20GF224J	81349	6	19
				RC20GF225J	81349	12	6
				RC20GF273J	81349	6	21
CP05A1KC223K3	80183	7	5				
CP05A1KC473K	81349	6	2	RC20GF303J	81349	3	17
CP05A1KC473K3	80183	7	4	RC20GF332J	81349	6	37
CP05A1KC473K3	80183	7	5	RC20GF333J	81349	6	41
CP05A1KE103K3	80183	7	5	RC20GF391J	81349	3	38
CS112	49956	3	18	RC20GF431J	81349	6	31
CS602	88220	8	44	RC20GF434J	81349	6	36
CV11A070	81349	5	1	RC20GF470J	81349	6	34
CV11A250	81349	5	3	RC20GF472J	81349	6	28
CW/645/GSM-83	80058	1	11	RC20GF473J	81349	7	13
CX-8378/GSM-83	80058	1	13	RC20GF473J	81349	12	4
CX-8379/GSM-83	80058	1	12	RC20GF474J	81349	7	15
C80V103AM	00656	6	4	RC20GF511J	81349	6	20
C80V103M	00656	7	10	RC20GF512J	81349	6	39
C80V202AM	00656	6	5	RC20GF513J	81349	7	9
C80V203AM	00656	6	8	RC20GF562J	81349	6	30
DA1400	72512	12	8	RC20GF563J	81349	6	32
DOT12	89665	6	43	RC20GF563J	81349	7	11
DOT2	89665	6	45	RC20GF6R8J	81349	6	42
DOT2	89665	7	2	RC20GF622J	81349	6	26
DOT34	89665	6	44	RC20GF681J	81349	6	27
DOT9	89665	7	12	RC20GF682J	81349	6	35
D1-3	00141	4	3	RC20GF683J	81349	7	14
ET-001A	81095	3	50	RC20GF822J	81349	6	33
FB46-5	71041	1	4	RC42GF101J	81349	9	3
FD-111	13715	6	11	RC42GF120J	81349	9	4
F101	44655	8	32	RC42GF151J	81349	9	5
F102	44655	8	31	RC42GF391J	81349	9	1
F103	44655	3	51	RC42GF560J	81349	9	2
GLX4	71400	8	16	RV4LAYS253A	81349	3	31
G3-100P2	00141	4	1	RV4LAYS501A	81349	3	29
G3-50	00141	4	12	RV4LAYS502A	81349	3	28
HS341	81095	8	42	RV4LAYS502A	81349	8	40
JS31	98278	4	2	RV4LAYS503A	81349	3	32
JS5	98278	4	5	RV4LAYS503A	81349	7	17
KMS12D2L	82214	8	4	SMB421892	80063	12	1
K1-13	00141	4	10	SMB421903	80063	12	3
MAPC15B	80583	3	42	SMB421938	80063	3	30
MAPC50B	80583	7	19				

## SECTION IV

TM 11-6625-694-24P

PART NUMBER	FSCM	FIG. NO.	ITEM NO.	PART NUMBER	FSCM	FIG. NO.	ITEM NO.
SMC421780-2	80063	3	22	11SM1	98278	4	11
SMC421780-3	80063	3	13	112D227C7030M1	80183	8	33
SMC421860	80063	1	5	12F30	81483	8	19
SMC421877	80063	1	3				
SMC421916	80063	3	14	12TS115-6	91929	8	14
SMC421939-2	80063	3	21				
SMC421939-3	80063	3	23	1420-9706	24655	3	41
SMC421939-4	80063	3	24	165-10	02660	8	37
SMC421939-5	80063	3	19	165-11	02660	3	52
SMC421941	80063	8	36	165-12	02660	8	39
SMC421953	80063	8	34	165-36	02660	3	56
SMC421956	80063	1	10	165-9	02660	8	35
SMD421774	80063	3	46	1990	71279	2	4
SMD421792	80063	1	1	2-140	71785	2	1
SMD421799	80063	3	45	2-522	00371	4	9
SMD421817	80063	8	1	2N1192	46859	6	14
SMD421836	80063	3	44	2N1192	46859	7	1
SMD421873	80063	1	2	2N2552	01295	6	16
SMD421910	80063	3	49	2N655	81223	6	15
SMD421917	80063	3	6	2187	83330	8	23
SMD421925	80063	1	14	22RJCC1000GSIL	78277	8	35
SMD421933	80063	3	43				
SMD421936	80063	3	25	22RJCC5000GSIL	78277	8	30
SMD421949	80063	1	7	2512	71590	3	33
TS-1811/GSM-83	80058	1	15	3-4TA51FS24	44655	8	24
TS101P01	81349	3	55	31-203	02660	3	53
TS101P01	81349	8	17	312.250	75915	8	2
UG260BU	02660	2	2	312.500	75915	8	10
UG262DU	80058	2	3	312001	75915	8	11
UP121M	80058	10	1	312002	75915	8	8
UP121M	80058	11	1	327	24455	8	6
1N140	12065	3	35	330	24455	8	2
1N140	12065	6	12	330	24455	8	13
1N1594A	81483	8	25	342006	75915	8	3
1N1605A	81483	8	26	3650-2	71279	2	5
1N472	99942	6	10	5-001-3	81073	12	7
101-5030	72619	3	8	5-140	71785	2	5
101-5030-932	72619	3	4	5H149	04850	1	9
101-5030-933	72619	8	12	52PA6Y2	91929	3	26
101-5030-935	72619	8	7				
101-5030-936	72619	3	1				
101-931	72619	3	7	91P3339154	56289	7	5
				91113	83330	3	48
105-204-200	94970	3	11				
				91121	83330	3	37
105-210-200	74970	3	10	91124	83330	8	27

LATEST NATIONAL STOCK NUMBER ASSIGNMENTS

STOCK NUMBER	FIG. NO.	ITEM NO.
5905-00-106-9344	9	6
5905-00-114-5378	3	16
5905-03-195-6453	6	30
5905-00-195-6791	6	27
5920-00-280-4181	8	2
5920-03-283-5062	8	8
6210-00-578-6810	8	7
5930-00-615-7882	3	20
5325-00-616-5040	3	36
5910-00-621-9880	6	7
5910-00-621-9800	7	8
5935-00-762-0312	3	12
5905-00-786-8307	6	42
5103-00-822-2580	8	22
5910-00-841-8747	6	9
6525-00-933-7366	1	14
5925-00-935-8540	6	29
5935-00-936-7383	2	3
5940-00-983-6067	8	28
6150-00-985-8398	1	13

LATEST PART NUMBER ASSIGNMENTS

PART NUMBER	FSCM	FIG. NO.	ITEM NO.
CL25BE201UP3	81349	6	9
MILC19978-19	81349	6	7
MILC19978-19	81349	7	8
M535059-27	96906	3	20
RRC20G101JS	81349	9	6
RRC20G164JS	81349	3	16
RRC20G30GJS	81349	6	29
40TB6	81349	8	28

## NATIONAL STOCK NUMBER AND PART NUMBER INDEX

## ADDITIONAL LATEST NATIONAL STOCK NUMBER ASSIGNMENTS

STOCK NUMBER	FIG NO	ITEM NO
6625-00-233-4680	3	3
5935-00-602-8749	3	9
3010-00-904-2763	4	3

## ADDITIONAL LATEST PART NUMBER ASSIGNMENTS

PART NUMBER	FSCM	FIG NO	ITEM NO
CM15CD200J03	81349	3	15
CM15CD220J03	81349	3	15
CM15ED300G03	81349	3	15
CM15ED300G03	81349	3	40
CM15FD101G03	81349	3	40
CM15FD161G03	81349	3	40
CM15FD181G03	81349	3	40
CM15FD201G03	81349	3	40
CP09AIKC105K3	81349	8	22
MS3106A16S-8SC	96906	10	2
MS3106A16S-8SC	96906	11	2
105-0203-200	74970	3	12
105-0207-200	74970	3	9
125	55026	3	3
22RJCC2500GSIL	75277	3	54
52PB4T2	91929	3	27

By Order of the Secretary of the Army:

Official

BERNARD W. ROGERS  
General United States Army  
Chief of Staff

J. C. PENNINGTON  
Brigadier General, United States Army  
The Adjutant General

Distribution:

*Active Army:*

USAINSCOM (2)

COE (1)

TSG (1)

USAARENBD (1)

DARCOM (1)

TRADOC (2)

OS Maj Comd (4)

TECOM (2)

USACC (4)

MDW (1)

Armies (2) except

7th USA (10)

8th USA (10)

Corps (2)

USAQMCENFL (10)

Svc Colleges (1)

USASIGS (5)

USAADS (2)

USAFAS (2)

USAARMS (2)

USAIS (2)

USAES (2)

USAICS (3)

MAAG (1)

USAQMS (10)

USARMIS (1)

USAERDAA (1)

USAERDAW (1)

NLABS (10)

USASPTCM (2)

Fort Gillem (10)

Fort Gordon (10)

Fort Huachuca (10)

Fort Carson (5)

Ft Monmouth (HISA) (26)

Ft Richardson (CERCOM) (2)

Army Dep (1) except

LBAD (14)

SAAD (30)

TOAD (14)

SHAD (3)

USA Dep (1)

Sig Sec USA Dep (1)

Units org under fol TOE:

(1 cy ea unit, UNOINDC)

29-207 (2)

29-610 (2)

10-296

29-134


29-136

NG: None

USAR: None

For explanation of abbreviations used, see AR 310-50.

RECOMMENDED CHANGES TO EQUIPMENT TECHNICAL MANUALS



## SOMETHING WRONG WITH THIS MANUAL?

**THEN... JOT DOWN THE DOPE ABOUT IT ON THIS FORM, TEAR IT OUT, FOLD IT AND DROP IT IN THE MAIL!**

**FROM: (YOUR UNIT'S COMPLETE ADDRESS)**  
 Commander  
 Stateside Army Depot  
 ATTN: AMSTA-US  
 Stateside, N.J. 07703

**DATE** 10 July 1975

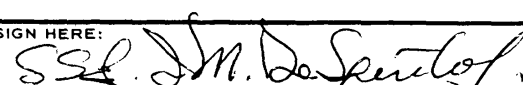
**PUBLICATION NUMBER**  
TM 11-5840-340-12

**DATE**  
23 Jan 74

**TITLE**  
Radar Set AN/APC-76

BE EXACT... PIN-POINT WHERE IT IS				IN THIS SPACE TELL WHAT IS WRONG AND WHAT SHOULD BE DONE ABOUT IT:
PAGE NO.	PARA-GRAPH	FIGURE NO.	TABLE NO.	
2-25	2-28			Recommend that the installation antenna alignment procedure be changed throughout to specify a 2° IFF antenna lag rather than 1°. <p style="margin-top: 10px;">REASON: Experience has shown that with only a 1° lag, the antenna servo system is too sensitive to wind gusting in excess of 25 knots, and has a tendency to rapidly accelerate and decelerate as it hunts, causing strain to the drive train. Hunting is minimized by adjusting the lag to 2° without degradation of operation.</p>
3-10	3-3		3-1	Item 5, Function column. Change "2 db" to "3db." <p style="margin-top: 10px;">REASON: The adjustment procedure for the TRANS POWER FAULT indicator calls for a 3 db (500 watts) adjustment to light the TRANS POWER FAULT indicator.</p>
5-6	5-8		FO3	Add new step f.1 to read, "Replace cover plate removed in step e.1, above." <p style="margin-top: 10px;">REASON: To replace the cover plate.</p> <p style="margin-top: 10px;">Zone C 3. On J1-2, change "+24 VDC to "+5 VDC."</p> <p style="margin-top: 10px;">REASON: This is the output line of the 5 VDC power supply. + 24 VDC is the input voltage.</p>

**TYPED NAME, GRADE OR TITLE, AND TELEPHONE NUMBER**  
 SSG I. M. DeSpirito 999-1776

**SIGN HERE:**  


TEAR ALONG DOTTED LINE

DA FORM 2028-2  
1 AUG 74

P.S.--IF YOUR OUTFIT WANTS TO KNOW ABOUT YOUR MANUAL "FIND," MAKE A CARBON COPY OF THIS AND GIVE IT TO YOUR HEADQUARTERS.

HISA 1686-75

RECOMMENDED CHANGES TO EQUIPMENT TECHNICAL MANUALS



**SOMETHING WRONG WITH THIS MANUAL?**

THEN . . . JOT DOWN THE DOPE ABOUT IT ON THIS FORM, TEAR IT OUT, FOLD IT AND DROP IT IN THE MAIL!

FROM: (YOUR UNIT'S COMPLETE ADDRESS)

DATE

PUBLICATION NUMBER

TM 11-6625-694-24P

DATE

29 Sep 78

TITLE

TEST SET, INSULATED BOOT AN/GSM-83

BE EXACT. . . PIN-POINT WHERE IT IS

PAGE NO.	PARA-GRAPH	FIGURE NO.	TABLE NO.
----------	------------	------------	-----------

IN THIS SPACE TELL WHAT IS WRONG AND WHAT SHOULD BE DONE ABOUT IT:

TEAR ALONG DOTTED LINE

TYPED NAME, GRADE OR TITLE, AND TELEPHONE NUMBER

SIGN HERE:

DA FORM 2028-2  
1 AUG 74

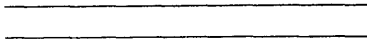
P.S.--IF YOUR OUTFIT WANTS TO KNOW ABOUT YOUR MANUAL "FIND," MAKE A CARBON COPY OF THIS AND GIVE IT TO YOUR HEADQUARTERS.

FILL IN YOUR  
UNIT'S ADDRESS



FOLD BACK

DEPARTMENT OF THE ARMY



OFFICIAL BUSINESS

PENALTY FOR PRIVATE USE, \$300

POSTAGE AND FEES PAID  
DEPARTMENT OF THE ARMY  
DOD-314



Commander  
US Army Communications and  
Electronics Materiel Readiness Command  
ATTN: DRSEL-ME-MQ  
Fort Monmouth, New Jersey 07703

TEAR ALONG DOTTED LINE

FOLD BACK



